



## Kv2.1 (Phospho-Ser805) Antibody

E11-8358A

**Catalog Number:** E11-8358A

**Concentration:** 1mg/ml

**Swiss-Prot No.:** Q14721

**Other Names:** DRK1; KCB1; KCNB1; Potassium channel Kv2.1; Potassium voltage-gated channel subfamily B member 1

**All Sites:** Human: Ser805; Mouse: Ser804; Rat: Ser804

**Storage/Stability:** Store at -20°C/1 year

**Form of Antibody:** Rabbit IgG in phosphate buffered saline (without Mg<sup>2+</sup> and Ca<sup>2+</sup>), pH 7.4, 150mM NaCl, 0.02% sodium azide and 50% glycerol.

**Immunogen:** The antiserum was produced against synthesized phosphopeptide derived from human Kv2.1 around the phosphorylation site of serine 805 (P-T-S<sup>p</sup>-P-K).

**Purification:** The antibody was affinity-purified from rabbit antiserum by affinity-chromatography using

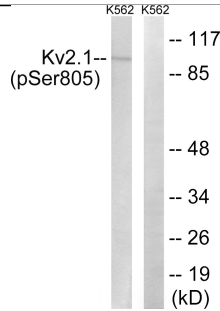
epitope-specific phosphopeptide. The antibody against non-phosphopeptide was removed by chromatography using non-phosphopeptide corresponding to the phosphorylation site.

**Specificity:** Kv2.1 (Phospho-Ser805) antibody detects endogenous levels of Kv2.1 only when phosphorylated at serine 805.

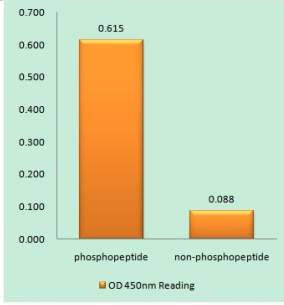
**Reactivity:** Human (Identities = 100%, Positives = 100%); Mouse (Identities = 100%, Positives = 100%); Rat (Identities = 100%, Positives = 100%)

**Applications:** WB: 1:500~1:1000    ELISA: 1:40000

**References:**  
Albrecht B., Recept. Channels 1:99-110(1993).  
Ikeda S.R., Submitted (JAN-1993) to the EMBL/GenBank/DDBJ databases.  
Deloukas P., Nature 414:865-871(2001).



Western blot analysis of extracts from K562 cells, treated with TNF (200ng/ml, 30mins), using Kv2.1 (Phospho-Ser805) antibody.



Kv2.1 (Phospho-Ser805) antibody reacts with epitope-specific phosphopeptide and corresponding non-phosphopeptide. The absorbance readings at 450 nM are shown in the ELISA figure.

**For Research Use Only**