



Kv2.1 (Ab-805) Antibody

E11-8358B

Catalog Number: E11-8358B

Concentration: 1mg/ml

Swiss-Prot No.: Q14721

Other Names: DRK1; KCB1; KCNB1; Potassium channel Kv2.1; Potassium voltage-gated channel subfamily B member 1

Storage/Stability: Store at -20°C/1 year

Form of Antibody: Rabbit IgG in phosphate buffered saline (without Mg²⁺ and Ca²⁺), pH 7.4, 150mM NaCl, 0.02% sodium azide and 50% glycerol.

Immunogen: The antiserum was produced against synthesized non-phosphopeptide derived from human Kv2.1 around the phosphorylation site of serine 805 (P-T-S^P-P-K).

Purification: The antibody was affinity-purified from

rabbit antiserum by affinity-chromatography using epitope-specific immunogen.

Specificity: Kv2.1 (Ab-805) antibody detects endogenous levels of total Kv2.1 protein.

Reactivity: Human (Identities = 100%, Positives = 100%); Mouse (Identities = 100%, Positives = 100%); Rat (Identities = 100%, Positives = 100%)

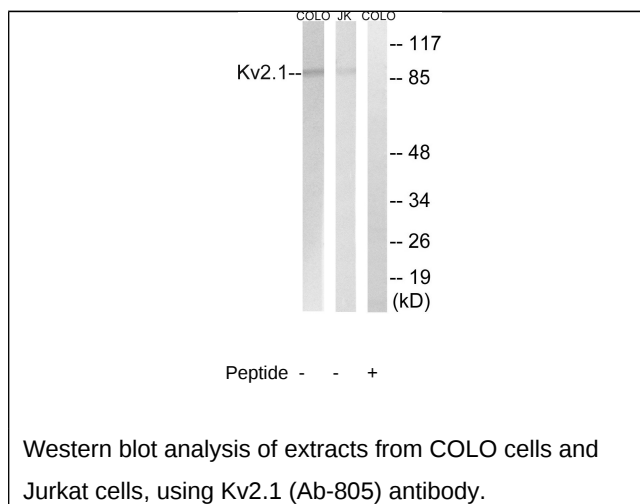
Applications: WB: 1:500~1:1000 ELISA: 1:20000

References:

Albrecht B., Recept. Channels 1:99-110(1993).

Ikeda S.R., Submitted (JAN-1993) to the EMBL/GenBank/DDBJ databases.

Deloukas P., Nature 414:865-871(2001).



For Research Use Only