



## MAPKAPK2 (Phospho-Ser272) Antibody

E11-8363A

**Catalog Number:** E11-8363A

**Concentration:** 1mg/ml

**Swiss-Prot No.:** P49137

**Other Names:** EC 2.7.11.1; kinase MAPKAPK2; MAP kinase-activated protein kinase 2; MAPK-activated protein kinase 2; MAPK2; MAPKAP kinase 2; MAPKAPK-2; MAPKAPK2; RPS6KC1

**All Sites:** Human: Ser272; Mouse: Ser258; Rat: Ser258

**Storage/Stability:** Store at -20°C/1 year

**Form of Antibody:** Rabbit IgG in phosphate buffered saline (without  $Mg^{2+}$  and  $Ca^{2+}$ ), pH 7.4, 150mM NaCl, 0.02% sodium azide and 50% glycerol.

**Immunogen:** The antiserum was produced against synthesized phosphopeptide derived from human MAPKAPK2 around the phosphorylation site of serine 272 (A-I-S<sup>P</sup>-P-G).

**Purification:** The antibody was affinity-purified from rabbit antiserum by affinity-chromatography using

epitope-specific phosphopeptide. The antibody against non-phosphopeptide was removed by chromatography using non-phosphopeptide corresponding to the phosphorylation site.

**Specificity:** MAPKAPK2 (Phospho-Ser272) antibody detects endogenous levels of MAPKAPK2 only when phosphorylated at serine 272.

**Reactivity:** Human (Identities = 100%, Positives = 100%); Mouse (Identities = 100%, Positives = 100%); Rat (Identities = 100%, Positives = 100%)

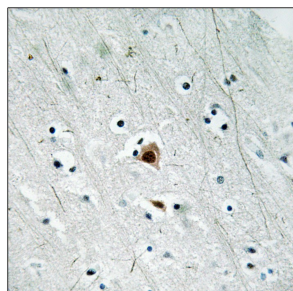
**Applications:** WB: 1:500~1:1000 IHC: 1:50~1:100  
ELISA: 1:1000

### References:

Zu Y.-L., Biochem. Biophys. Res. Commun. 200-1118-1124(1994).

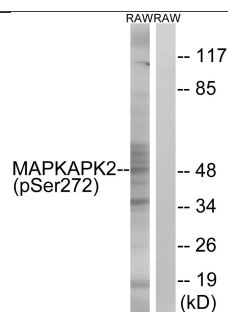
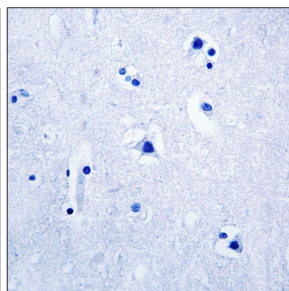
The MGC Project Team; [Genome Res. 14:2121-2127\(2004\)](#).

[Stokoe D.](#), Biochem. J. 296:843-849(1993).



P-peptide - +

Immunohistochemistry analysis of paraffin-embedded human brain tissue using MAPKAPK2 (Phospho-Ser272) antibody.



UV + +  
P-peptide - +

Western blot analysis of extracts from RAW264.7 cells, treated with UV (15mins), using MAPKAPK2 (Phospho-Ser272) antibody.

**For Research Use Only**