



## MDC1 (Phospho-Ser513) Antibody

E11-8368A

**Catalog Number:** E11-8368A

**Concentration:** 1mg/ml

**Swiss-Prot No.:** Q14676

**Other Names:** DKFZp781A0122; IER3; KIAA0170;  
mediator of DNA damage checkpoint 1; MGC166888;  
NFBBD1

**All Sites:** Human: Ser513

**Storage/Stability:** Store at -20°C/1 year

**Form of Antibody:** Rabbit IgG in phosphate buffered  
saline (without  $Mg^{2+}$  and  $Ca^{2+}$ ), pH 7.4, 150mM NaCl,  
0.02% sodium azide and 50% glycerol.

**Immunogen:** The antiserum was produced against  
synthesized phosphopeptide derived from human MDC1  
around the phosphorylation site of serine 513  
(L-E-R-S<sup>P</sup>-Q).

**Purification:** The antibody was affinity-purified from  
rabbit antiserum by affinity-chromatography using  
epitope-specific phosphopeptide. The antibody against  
non-phosphopeptide was removed by chromatography  
using non-phosphopeptide corresponding to the  
phosphorylation site.

**Specificity:** MDC1 (Phospho-Ser513) antibody detects  
endogenous levels of MDC1 only when phosphorylated at  
serine 513.

**Reactivity:** Human (Identities = 100%, Positives = 100%)

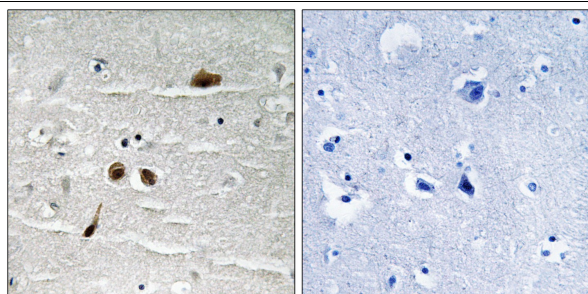
**Applications:** IHC: 1:50~1:100 ELISA: 1:1000

### References:

Nagase T., DNA Res. 3:17-24(1996).

Shiina T., Genetics 173:1555-1570(2006).

Mungall A.J., Nature 425:805-811(2003).



P-peptide       -                       +

Immunohistochemistry analysis of paraffin-embedded  
human brain tissue using MDC1 (Phospho-Ser513)  
antibody.

**For Research Use Only**