



MDM4 (Phospho-Ser367) Antibody

E11-8369A

Catalog Number: E11-8369A

Concentration: 1mg/ml

Swiss-Prot No.: O15151

Other Names: double minute 4 protein; Mdm2-like p53-binding protein; MDMX; p53-binding protein Mdm4

All Sites: Human: Ser367; Mouse: Ser367; Rat: Ser368

Storage/Stability: Store at -20°C/1 year

Form of Antibody: Rabbit IgG in phosphate buffered saline (without Mg^{2+} and Ca^{2+}), pH 7.4, 150mM NaCl, 0.02% sodium azide and 50% glycerol.

Immunogen: The antiserum was produced against synthesized phosphopeptide derived from human MDM4 around the phosphorylation site of serine 367 (T-I-S^P-A-P).

Purification: The antibody was affinity-purified from rabbit antiserum by affinity-chromatography using epitope-specific phosphopeptide. The antibody against

non-phosphopeptide was removed by chromatography using non-phosphopeptide corresponding to the phosphorylation site.

Specificity: MDM4 (Phospho-Ser367) antibody detects endogenous levels of MDM4 only when phosphorylated at serine 367.

Reactivity: Human (Identities = 100%, Positives = 100%); Mouse (Identities = 100%, Positives = 100%); Rat (Identities = 100%, Positives = 100%)

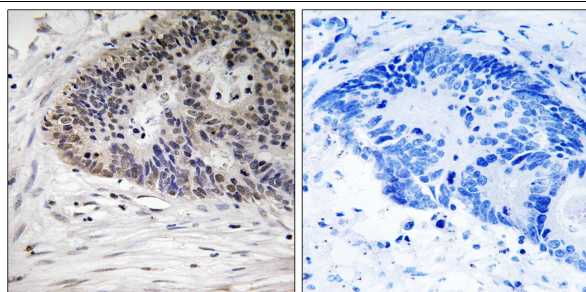
Applications: WB: 1:500~1:1000 IHC: 1:50~1:100 ELISA: 1:1000

References:

Shvarts A., Genomics 43:34-42(1997).

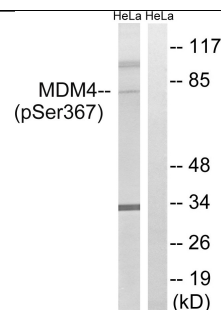
Gregory S.G., Nature 441:315-321(2006).

Sharp D.A., J. Biol. Chem. 274:38189-38196(1999).



P-peptide - +

Immunohistochemistry analysis of paraffin-embedded human colon carcinoma tissue using MDM4 (Phospho-Ser367) antibody.



calyculinA + +
P-peptide - +

Western blot analysis of extracts from HeLa cells, treated with calyculinA (50ng/ml, 30mins), using MDM4 (Phospho-Ser367) antibody.

For Research Use Only