



MLK3 Antibody

E11-8375B

Catalog Number: E11-8375B

Concentration: 1mg/ml

Swiss-Prot No.: Q16584

Other Names: EC 2.7.11.25; kinase MLK3; M3K11; MAP3K11; MAPKKK11; mitogen activated protein kinase kinase kinase 11; mixed lineage kinase 3; MLK-3; Similar to mitogen-activated protein kinase kinase kinase 11; SPRK

Storage/Stability: Store at -20°C/1 year

Form of Antibody: Rabbit IgG in phosphate buffered saline (without Mg^{2+} and Ca^{2+}), pH 7.4, 150mM NaCl, 0.02% sodium azide and 50% glycerol.

Immunogen: The antiserum was produced against synthesized peptide derived from Internal of human MLK3.

Purification: The antibody was affinity-purified from rabbit antiserum by affinity-chromatography using epitope-specific immunogen.

Specificity: MLK3 antibody detects endogenous levels of total MLK3 protein.

Reactivity: Human (Identities = 100%, Positives = 100%); Mouse (Identities = 90%, Positives = 90%); Rat (Identities = 90%, Positives = 90%)

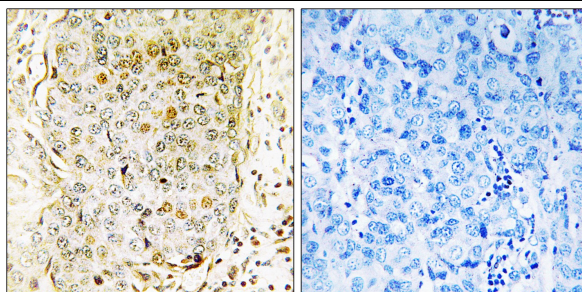
Applications: IHC: 1:50~1:100 ELISA: 1:20000

References:

Gallo K.A., J. Biol. Chem. 269:15092-15100(1994).

Ing Y.L., Oncogene 9:1745-1750(1994).

Leung I.W.L., J. Biol. Chem. 273:32408-32415(1998).



Peptide - +

Immunohistochemistry analysis of paraffin-embedded human breast carcinoma tissue using MLK3 antibody.

For Research Use Only