



HER3 (Phospho-Tyr1197) Antibody

E11-8460A

Catalog Number: E11-8460A

Concentration: 1mg/ml

Swiss-Prot No.: P21860

Other Names: c-erbB3; EC 2.7.10.1; ERB3; ERBB3; HER3; kinase ErbB3; Receptor protein-tyrosine kinase erbB-3 precursor; Tyrosine kinase-type cell surface receptor HER3

All Sites: Human: Tyr1197; Mouse: Tyr1194; Rat: Tyr1194

Storage/Stability: Store at -20°C/1 year

Form of Antibody: Rabbit IgG in phosphate buffered saline (without Mg^{2+} and Ca^{2+}), pH 7.4, 150mM NaCl, 0.02% sodium azide and 50% glycerol.

Immunogen: The antiserum was produced against synthesized phosphopeptide derived from human HER3 around the phosphorylation site of tyrosine 1197 (E-E-Y^P-E-Y).

Purification: The antibody was affinity-purified from rabbit antiserum by affinity-chromatography using

epitope-specific phosphopeptide. The antibody against non-phosphopeptide was removed by chromatography using non-phosphopeptide corresponding to the phosphorylation site.

Specificity: HER3 (Phospho-Tyr1197) antibody detects endogenous levels of HER3 only when phosphorylated at tyrosine 1197.

Reactivity: Human (Identities = 100%, Positives = 100%); Mouse (Identities = 100%, Positives = 100%); Rat (Identities = 100%, Positives = 100%)

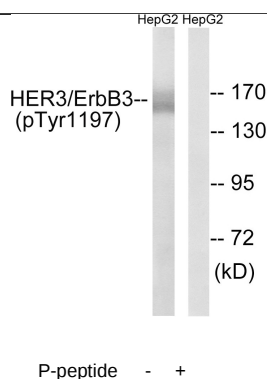
Applications: WB: 1:500~1:1000 ELISA: 1:40000

References:

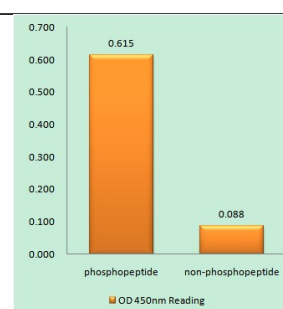
Kraus M.H., Proc. Natl. Acad. Sci. U.S.A. 86:9193-9197(1989).

Plowman G.D., Proc. Natl. Acad. Sci. U.S.A. 87:4905-4909(1990).

Katoh M., Biochem. Biophys. Res. Commun. 192:1189-1197(1993).



Western blot analysis of extracts from HepG2 cells, using HER3 (Phospho-Tyr1197) antibody.



HER3 (Phospho-Tyr1197) antibody reacts with epitope-specific phosphopeptide and corresponding non-phosphopeptide. The absorbance readings at 450 nM are shown in the ELISA figure.

For Research Use Only

For Research Use Only