



HS1 (Phospho-Tyr378) Antibody

E11-8461A

Catalog Number: E11-8461A

Concentration: 1mg/ml

Swiss-Prot No.: P14317

Other Names: Hematopoietic lineage cell-specific protein, Hematopoietic cell-specific LYN substrate 1, LckBP1, p75

All Sites: Human: Tyr378

Storage/Stability: Store at -20°C/1 year

Form of Antibody: Rabbit IgG in phosphate buffered saline (without Mg^{2+} and Ca^{2+}), pH 7.4, 150mM NaCl, 0.02% sodium azide and 50% glycerol.

Immunogen: The antiserum was produced against synthesized phosphopeptide derived from human HS1 around the phosphorylation site of tyrosine 378.

Purification: The antibody was affinity-purified from rabbit antiserum by affinity-chromatography using epitope-specific phosphopeptide. The antibody against

non-phosphopeptide was removed by chromatography using non-phosphopeptide corresponding to the phosphorylation site.

Specificity: HS1 (Phospho-Tyr378) antibody detects endogenous levels of HS1 only when phosphorylated at tyrosine 378.

Reactivity: Human

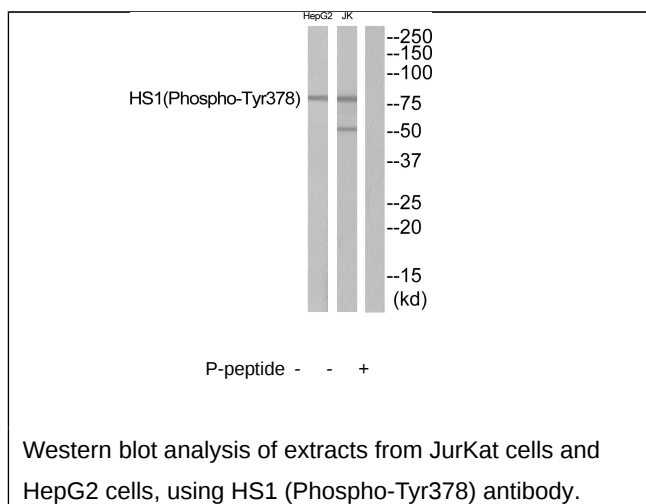
Applications: WB: 1:500~1:1000 ELISA: 1:40000

References:

Kitamura D., Nucleic Acids Res. 17:9367-9379(1989) [PubMed: 2587259].

Muzny D.M., Nature 440:1194-1198(2006) [PubMed: 16641997].

Choudhary C., Science 325:834-840(2009) [PubMed: 19608861].



For Research Use Only