



## Lamin A (Phospho-Ser22) Antibody

E11-8464A

**Catalog Number:** E11-8464A

**Concentration:** 1mg/ml

**Swiss-Prot No.:** P02545

**Other Names:** 70 kDa lamin; LAMA; LMN1; LMNA

**All Sites:** Human: Ser22; Mouse: Ser22; Rat: Ser22

**Storage/Stability:** Store at -20°C/1 year

**Form of Antibody:** Rabbit IgG in phosphate buffered saline (without  $Mg^{2+}$  and  $Ca^{2+}$ ), pH 7.4, 150mM NaCl, 0.02% sodium azide and 50% glycerol.

**Immunogen:** The antiserum was produced against synthesized phosphopeptide derived from human Lamin A around the phosphorylation site of serine 22 (P-L-S<sup>P</sup>-P-T).

**Purification:** The antibody was affinity-purified from rabbit antiserum by affinity-chromatography using epitope-specific phosphopeptide. The antibody against non-phosphopeptide was removed by chromatography

using non-phosphopeptide corresponding to the phosphorylation site.

**Specificity:** Lamin A (Phospho-Ser22) antibody detects endogenous levels of Lamin A only when phosphorylated at serine 22.

**Reactivity:** Human (Identities = 100%, Positives = 100%); Mouse (Identities = 100%, Positives = 100%); Rat (Identities = 100%, Positives = 100%)

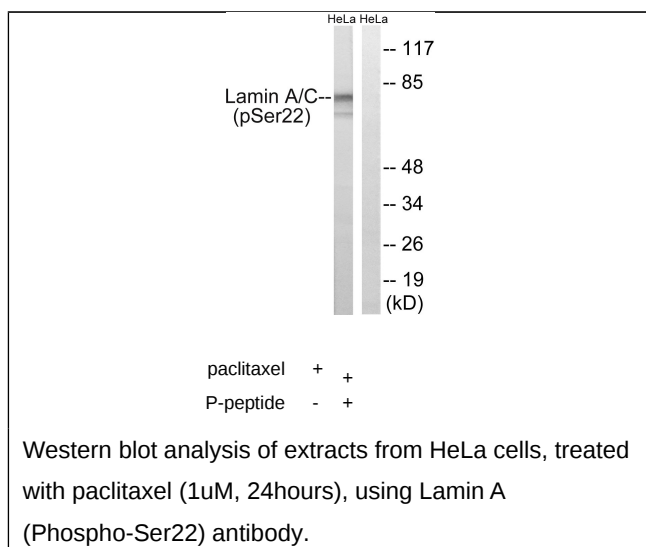
**Applications:** WB: 1:500~1:1000 ELISA: 1:1000

### References:

McKeon F.D., Nature 319:463-468(1986).

Fisher D.Z., Proc. Natl. Acad. Sci. U.S.A. 83:6450-6454(1986).

The MGC Project Team; Genome Res. 14:2121-2127(2004).



**For Research Use Only**