



Lamin A (Ab-22) Antibody

E11-8464B

Catalog Number: E11- 8464B

Concentration: 1mg/ml

Swiss-Prot No.: P02545

Other Names: 70 kDa lamin; LAMA; LMN1; LMNA

Storage/Stability: Store at -20°C/1 year

Form of Antibody: Rabbit IgG in phosphate buffered saline (without Mg^{2+} and Ca^{2+}), pH 7.4, 150mM NaCl, 0.02% sodium azide and 50% glycerol.

Immunogen: The antiserum was produced against synthesized non-phosphopeptide derived from human Lamin A around the phosphorylation site of serine 22 (P-L-S^P-P-T).

Purification: The antibody was affinity-purified from rabbit antiserum by affinity-chromatography using epitope-specific immunogen.

Specificity: Lamin A (Ab-22) antibody detects endogenous levels of total Lamin A protein.

Reactivity: Human (Identities = 100%, Positives = 100%); Mouse (Identities = 100%, Positives = 100%);
Rat (Identities = 100%, Positives = 100%)

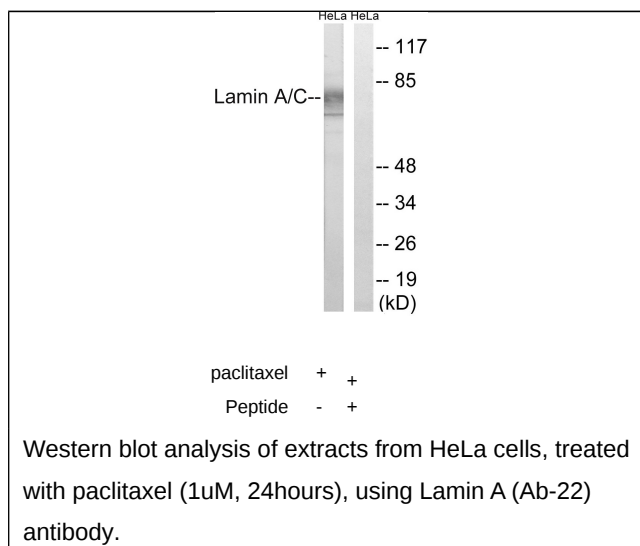
Applications: WB: 1:500~1:1000 ELISA: 1:10000

References:

McKeon F.D., Nature 319:463-468(1986).

Fisher D.Z., Proc. Natl. Acad. Sci. U.S.A. 83:6450-6454(1986).

The MGC Project Team; Genome Res. 14:2121-2127(2004).



For Research Use Only