



## AKT1 (Phospho-Thr308) Antibody

E11-8483A

**Catalog Number:** E11-8483A

**Concentration:** 1mg/ml

**Swiss-Prot No.:** P31749

**Other Names:** AKT; AKT1 kinase; C-AKT; kinase Akt1; PKB; PKB-alpha; Protein kinase B; RAC; RAC-alpha serine/threonine kinase; RAC-PK-alpha

**All Sites:** Human: Thr308

**Storage/Stability:** Store at -20°C/1 year

**Form of Antibody:** Rabbit IgG in phosphate buffered saline (without Mg<sup>2+</sup> and Ca<sup>2+</sup>), pH 7.4, 150mM NaCl, 0.02% sodium azide and 50% glycerol.

**Immunogen:** The antiserum was produced against synthesized phosphopeptide derived from human AKT1 around the phosphorylation site of threonine 308 (M-K-T<sup>P</sup>-F-C).

**Purification:** The antibody was affinity-purified from rabbit antiserum by affinity-chromatography using

epitope-specific phosphopeptide. The antibody against non-phosphopeptide was removed by chromatography using non-phosphopeptide corresponding to the phosphorylation site.

**Specificity:** AKT1 (Phospho-Thr308) antibody detects endogenous levels of AKT1 only when phosphorylated at threon 308.

**Reactivity:** Human (Identities = 100%, Positives = 100%)

Mouse (Identities = 100%, Positives = 100%)

Rat (Identities = 100%, Positives = 100%)

**Applications:** WB: 1:500~1:1000 IHC: 1:50~1:100

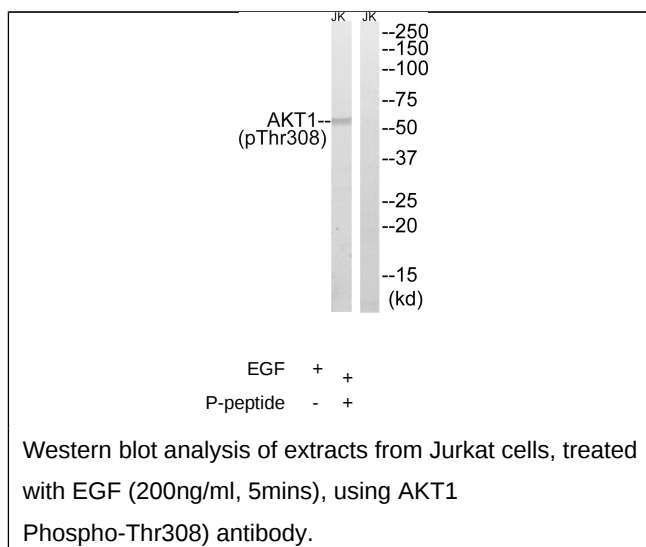
ELISA: 1:40000

### References:

[Permutt M.A., Diabetologia 44:910-913\(2001\).](#)

[Noguchi M., Mol. Cell 6:395-407\(2000\).](#)

[Lienhard G.E., J. Biol. Chem. 277:22115-22118\(2002\).](#)



**For Research Use Only**