



BCL2 (Phospho-Ser70) Antibody

E11-8490A

Catalog Number: E11-8490A

Concentration: 1mg/ml

Swiss-Prot No.: P10415

Other Names: Apoptosis regulator Bcl-2; B-cell CLL/lymphoma 2; BCL2

All Sites: Mouse: Ser70; Rat: Ser70

Storage/Stability: Store at -20°C/1 year

Form of Antibody: Rabbit IgG in phosphate buffered saline (without Mg^{2+} and Ca^{2+}), pH 7.4, 150mM NaCl, 0.02% sodium azide and 50% glycerol.

Immunogen: The antiserum was produced against synthesized phosphopeptide derived from human BCL2 around the phosphorylation site of serine 70 (R-T-S^P-P-L).

Purification: The antibody was affinity-purified from rabbit antiserum by affinity-chromatography using

epitope-specific phosphopeptide. The antibody against non-phosphopeptide was removed by chromatography using non-phosphopeptide corresponding to the phosphorylation site.

Specificity: BCL2 (Phospho-Ser70) antibody detects endogenous levels of BCL2 only when phosphorylated at serine 70.

Reactivity: Mouse (Identities = 100%, Positives = 100%);
Rat (Identities = 100%, Positives = 100%)

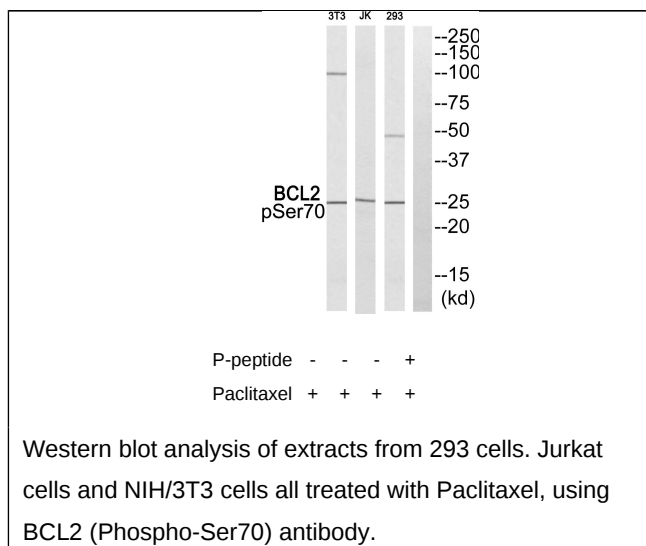
Applications: WB: 1:500~1:1000 ELISA: 1:40000

References:

[Tsujiimoto Y., Proc. Natl. Acad. Sci. U.S.A. 83:5214-5218\(1986\).](#)

[Eguchi Y., Nucleic Acids Res. 20:4187-4192\(1992\).](#)

[Cleary M.L., Cell 47:19-28\(1986\).](#)



For Research Use Only