



## FADD (Phospho-Ser191) Antibody

E11-8503A

**Catalog Number:** E11-8503A

**Concentration:** 1mg/ml

**Swiss-Prot No.:** Q13158

**Other Names:** FAS-associating death domain-containing protein; Mediator of receptor induced toxicity; MORT1

**All Sites:** Human: Ser191

**Storage/Stability:** Store at -20°C/1 year

**Form of Antibody:** Rabbit IgG in phosphate buffered saline (without Mg<sup>2+</sup> and Ca<sup>2+</sup>), pH 7.4, 150mM NaCl, 0.02% sodium azide and 50% glycerol.

**Immunogen:** The antiserum was produced against synthesized phosphopeptide derived from human FADD around the phosphorylation site of serine 191 (N-M-S<sup>P</sup>-P-V).

**Purification:** The antibody was affinity-purified from rabbit antiserum by affinity-chromatography using

epitope-specific phosphopeptide. The antibody against non-phosphopeptide was removed by chromatography using non-phosphopeptide corresponding to the phosphorylation site.

**Specificity:** FADD (Phospho-Ser191) antibody detects endogenous levels of FADD only when phosphorylated at serine 191.

**Reactivity:** Human (Identities = 100%, Positives = 100%)  
Mouse (Identities = 100%, Positives = 100%)

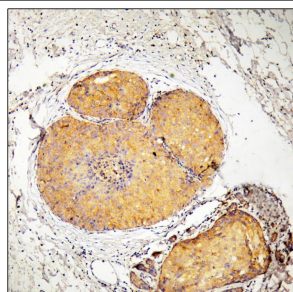
**Applications:** WB: 1:500~1:1000 IHC: 1:50~1:100  
ELISA: 1:10000

### References:

[Sugano S., Nat. Genet. 36:40-45\(2004\).](#)

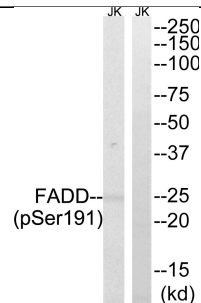
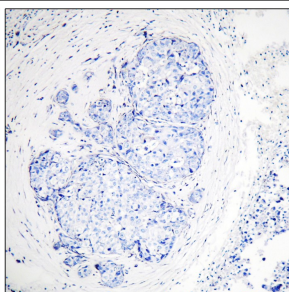
[Farmer A., Submitted \(MAY-2003\).](#)

[Venter J.C., Submitted \(JUL-2005\).](#)



P-peptide - +

Immunohistochemistry analysis of paraffin-embedded human breast carcinoma tissue, using FADD (Phospho-Ser191) antibody.



PMA + +  
P-peptide - +

Western blot analysis of extracts from Jurkat cells, treated with PMA (125ng/ml, 30mins), using FADD (Phospho-Ser191) antibody.

**For Research Use Only**