



PRKCA Antibody

E11-8533B

Catalog Number: E11-8533B

Concentration: 1mg/ml

Swiss-Prot No.: P17252

Other Names: EC 2.7.11.13; kinase PKC-alpha; KPCA; PKC III; PKC-A; PKC-alpha; PKC-III; PRKACA; PRKCA; Protein kinase C, alpha type

Storage/Stability: Store at -20°C/1 year

Form of Antibody: Rabbit IgG in phosphate buffered saline (without Mg^{2+} and Ca^{2+}), pH 7.4, 150mM NaCl, 0.02% sodium azide and 50% glycerol.

Immunogen: The antiserum was produced against synthesized peptide derived from Internal of human PRKCA.

Purification: The antibody was affinity-purified from rabbit antiserum by affinity-chromatography using

epitope-specific immunogen.

Specificity: PRKCA antibody detects endogenous levels of total PRKCA protein.

Reactivity: Human (Identities = 100%, Positives = 100%); Mouse (Identities = 100%, Positives = 100%);
Rat (Identities = 100%, Positives = 100%)

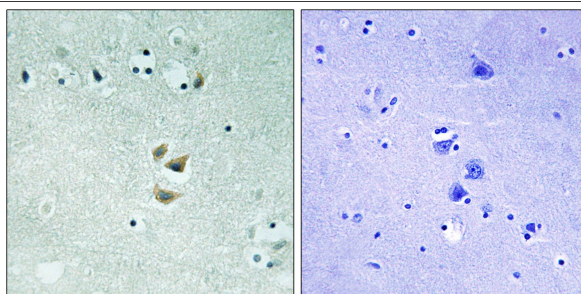
Applications: IHC: 1:50~1:100 ELISA: 1:10000

References:

Epithelium; Nucleic Acids Res. 18:2183-2183(1990).

The MGC Project Team; Genome Res. 14:2121-2127(2004).

McSwine-Kennick R.L., J. Biol. Chem. 266:15135-15143(1991).



Peptide - +

Immunohistochemistry analysis of paraffin-embedded human brain tissue using PRKCA antibody.

For Research Use Only