



C-RAF (Phospho-Ser642) Antibody

E11-8537A

Catalog Number: E11-8537A

Concentration: 1mg/ml

Swiss-Prot No.: P04049

Other Names: C-RAF; C-Raf; CRAF; kinase Raf1; Protein kinase raf 1; RAF proto-oncogene serine/threonine-protein kinase; Raf proto-oncogene serine/threonine-protein kinase; RAF-1; Raf-1; RAF1; Similar to murine leukemia viral (V-raf-1) oncogene homolog 1

All Sites: Human: Ser642; Mouse: Ser642; Rat: Ser642

Storage/Stability: Store at -20°C/1 year

Form of Antibody: Rabbit IgG in phosphate buffered saline (without Mg²⁺ and Ca²⁺), pH 7.4, 150mM NaCl, 0.02% sodium azide and 50% glycerol.

Immunogen: The antiserum was produced against synthesized phosphopeptide derived from human C-RAF around the phosphorylation site of serine 642 (T-T-S^P-P-R).

Purification: The antibody was affinity-purified from rabbit antiserum by affinity-chromatography using epitope-specific phosphopeptide. The antibody against non-phosphopeptide was removed by chromatography using non-phosphopeptide corresponding to the phosphorylation site.

Specificity: C-RAF (Phospho-Ser642) antibody detects endogenous levels of C-RAF only when phosphorylated at serine 642.

Reactivity: Human (Identities = 100%, Positives = 100%);

Mouse (Identities = 100%, Positives = 100%);

Rat (Identities = 100%, Positives = 100%)

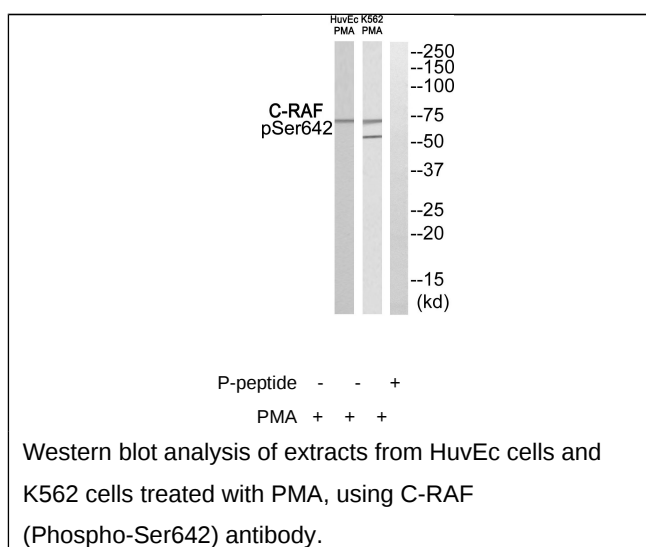
Applications: WB: 1:500~1:1000 ELISA: 1:40000

References:

Bonner T.I., *Nucleic Acids Res.* 14:1009-1015(1986).

Ota T., *Nat. Genet.* 36:40-45(2004).

Mural R.J., Submitted (JUL-2005) to the EMBL/GenBank/DDBJ databases.



For Research Use Only