



## ATF-4 (Phospho-Ser219) Antibody

E11-9003A

**Catalog Number:** E11-9003A

**Concentration:** 1mg/ml

**Swiss-Prot No.:** P18848

**Other Names:** Activating transcription factor 4; activating transcription factor 4 (tax-responsive enhancer element B67); ATF4; cAMP response element-binding protein 2; cAMP-dependent transcription factor ATF-4; cAMP-responsive element-binding protein 2; CREB-2; CREB2; Cyclic AMP-dependent transcription factor ATF-4; Cyclic AMP-responsive element-binding protein 2; DNA-binding protein TAXREB67; Tax-responsive enhancer element-binding protein 67; TaxREB67; TXREB

**All Sites:** Human: Ser219; Mouse: Ser218

**Storage/Stability:** Store at -20°C/1 year

**Form of Antibody:** Rabbit IgG in phosphate buffered saline (without  $Mg^{2+}$  and  $Ca^{2+}$ ), pH 7.4, 150mM NaCl, 0.02% sodium azide and 50% glycerol.

**Immunogen:** The antiserum was produced against synthesized phosphopeptide derived from human ATF4 around the phosphorylation site of serine 219.

**Purification:** The antibody was affinity-purified from rabbit antiserum by affinity-chromatography using epitope-specific phosphopeptide. The antibody against non-phosphopeptide was removed by chromatography using non-phosphopeptide corresponding to the phosphorylation site.

**Specificity:** ATF-4 (Phospho-Ser219) Antibody detects endogenous levels of ATF4 only when phosphorylated at serine 219.

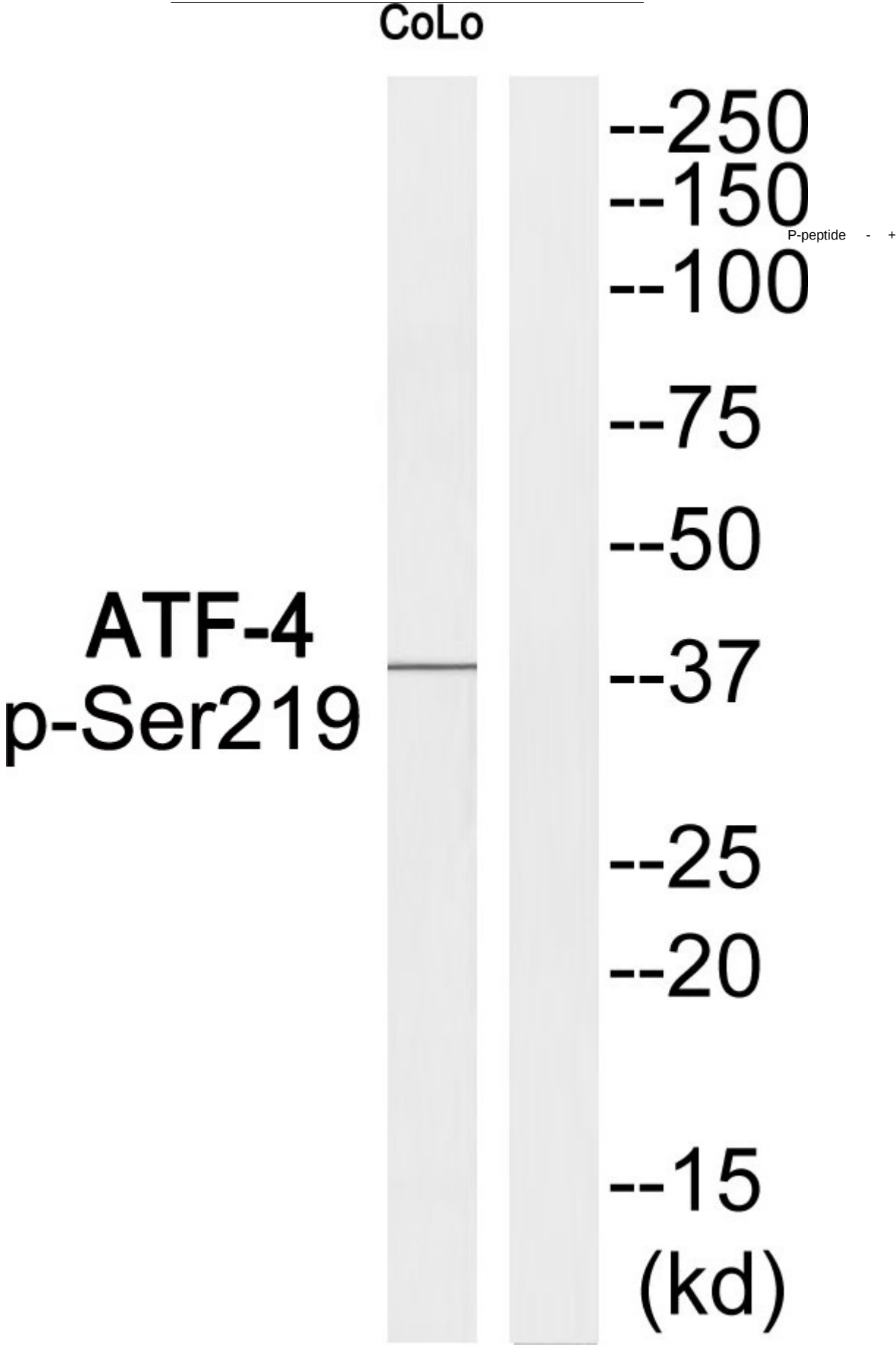
**Reactivity:** Human; Mouse

**Applications:** WB: 1:500~1:1000 ELISA: 1:20000

**References:**

Tsujimoto A., J. Virol. 65:1420-1426(1991). Karpinski B.A., Proc. Natl. Acad. Sci. U.S.A. 89:4820-4824(1992).

**For Research Use Only**



Western blot analysis of extracts from COLO205 cells,  
using ATF-4 (Phospho-Ser219) Antibody.

**For Research Use Only**