



CSFR (Phospho-Tyr708) Antibody

E11-9015A

Catalog Number: E11-9015A

Concentration: 1mg/ml

Swiss-Prot No.: P07333

Other Names: C-FMS; CD115; CD115 antigen; colony stimulating factor 1 receptor; CSF-1-R; CSF1R; CSFR; FIM2; FMS; FMS proto-oncogene; macrophage colony stimulating factor I receptor; Macrophage colony-stimulating factor 1 receptor; McDonough feline sarcoma viral (v-fms) oncogene homolog; Proto-oncogene c-Fms

All Sites: Human: Tyr708; Mouse: Tyr706; Rat: Tyr706

Storage/Stability: Store at -20°C/1 year

Form of Antibody: Rabbit IgG in phosphate buffered saline (without Mg^{2+} and Ca^{2+}), pH 7.4, 150mM NaCl, 0.02% sodium azide and 50% glycerol.

Immunogen: The antiserum was produced against

synthesized phosphopeptide derived from human CSF1R around the phosphorylation site of tyrosine 708.

Purification: The antibody was affinity-purified from rabbit antiserum by affinity-chromatography using epitope-specific phosphopeptide. The antibody against non-phosphopeptide was removed by chromatography using non-phosphopeptide corresponding to the phosphorylation site.

Specificity: CSFR (Phospho-Tyr708) Antibody detects endogenous levels of CSF1R only when phosphorylated at tyrosine 708.

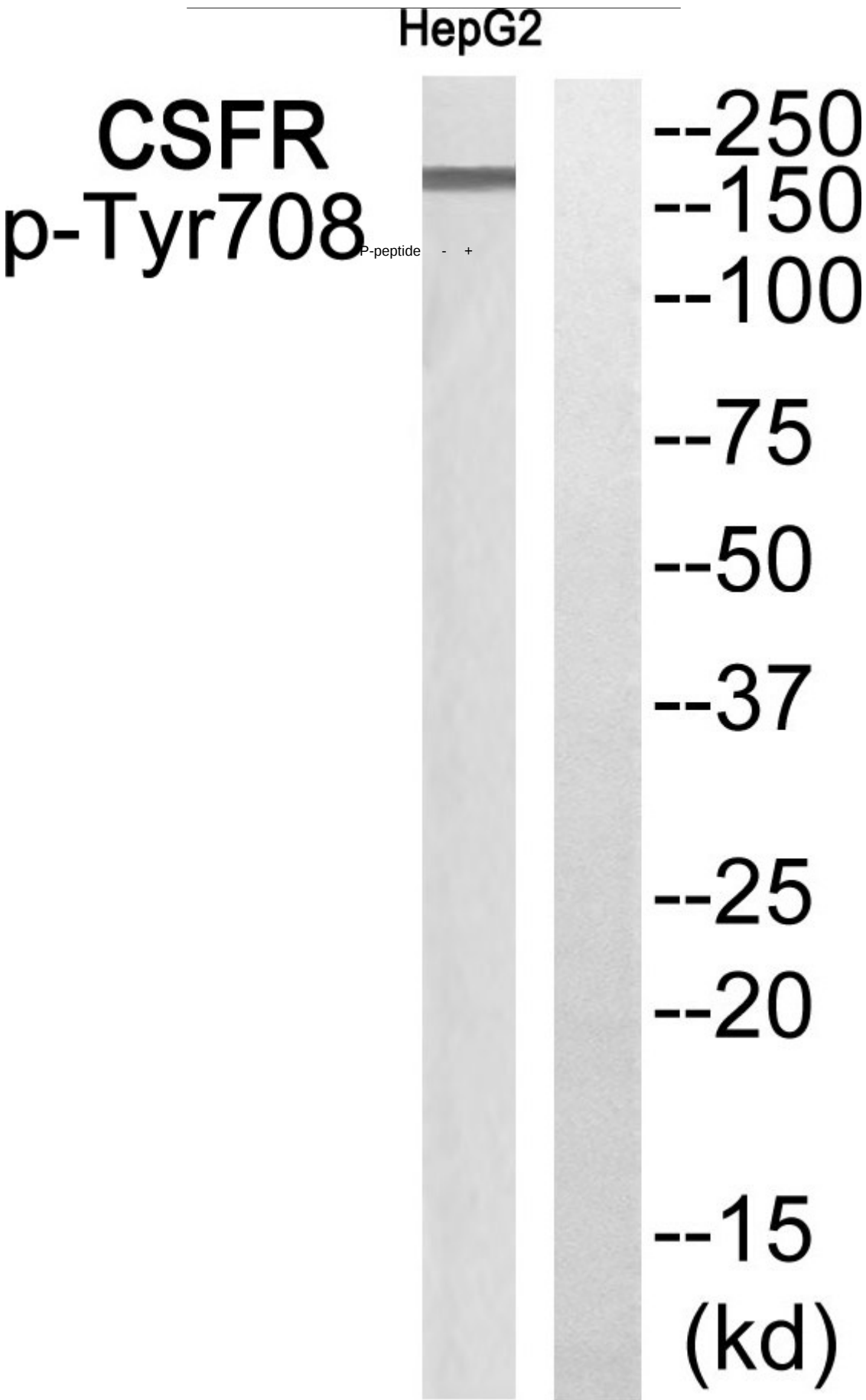
Reactivity: Human; Mouse; Rat

Applications: WB: 1:500~1:1000 ELISA: 1:20000

References:

Hampe A., Oncogene Res. 4:9-17(1989) .Andre C., Genomics 39:216-226(1997).

For Research Use Only



Western blot analysis of extracts from HepG2 cells, using
CSFR (Phospho-Tyr708) Antibody

For Research Use Only