



EPHA2/5 (Ab-594) Antibody

E11-9023B

Catalog Number: E11-9023B

Concentration: 1mg/ml

Swiss-Prot No.: P29317/P54756

Other Names: ARCC2; ECK; EPH receptor A2; EPHA2; ephrin receptor EphA2; Ephrin type-A receptor 2; Epithelial cell kinase; epithelial cell receptor protein tyrosine kinase; protein tyrosine kinase; soluble EPHA2 variant 1; Tyrosine-protein kinase receptor ECK

Storage/Stability: Store at -20°C/1 year

Form of Antibody: Rabbit IgG in phosphate buffered saline (without Mg^{2+} and Ca^{2+}), pH 7.4, 150mM NaCl, 0.02% sodium azide and 50% glycerol.

Lindberg R.A., Mol. Cell. Biol. 10:6316-6324(1990). Gregory S.G., Nature 441:315-321(2006).

Immunogen: The antiserum was produced against synthesized non-phosphopeptide derived from human EPHA2 around the phosphorylation site of tyrosine 594.

Purification: The antibody was affinity-purified from rabbit antiserum by affinity-chromatography using epitope-specific immunogen.

Specificity: EPHA2/5 (Ab-594) Antibody detects endogenous levels of total EPHA2 protein.

Reactivity: Human; Mouse

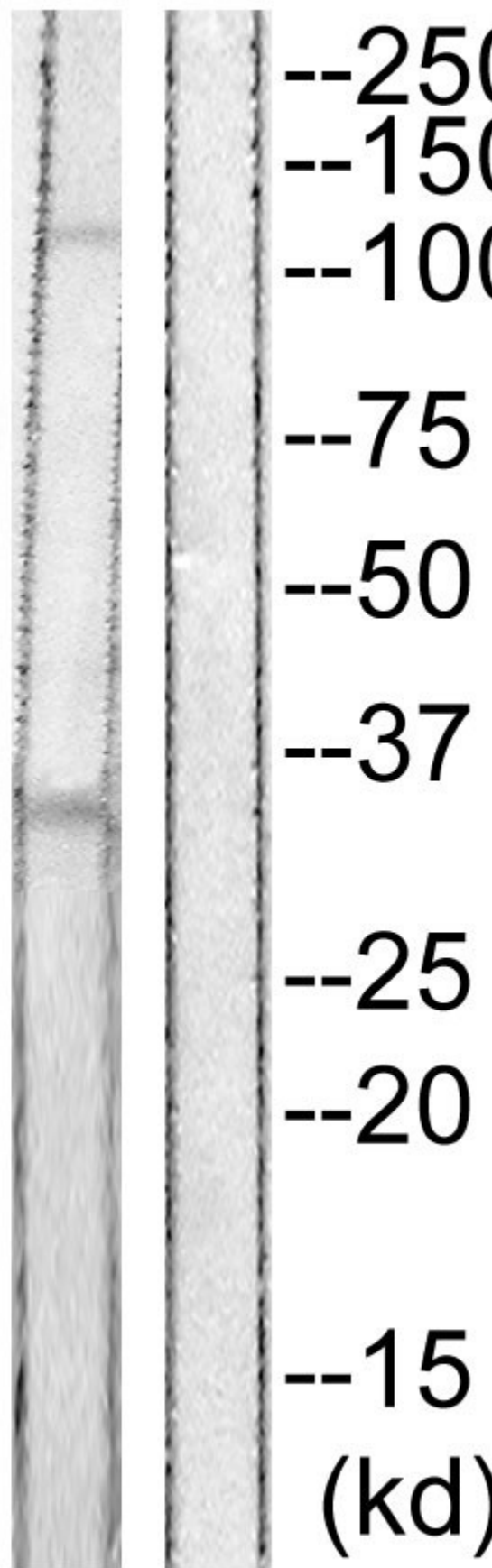
Applications: WB: 1:500~1:1000 ELISA: 1:20000

References:

For Research Use Only

EPHA2/5(Ab-594)

JK



For Research Use Only

Western blot analysis of extracts from JK cells, using
EPHA2/5 (Ab-594) Antibody

For Research Use Only