



OXER1 Antibody

E11-937G

Catalog Number: E11-937G

Concentration: 1mg/ml

Swiss-Prot No.: Q8TDS5

Other Names: 5-oxo-ETE G-protein coupled receptor

Storage/Stability: Store at -20°C/1 year

Form of Antibody: Rabbit IgG in phosphate buffered saline (without Mg^{2+} and Ca^{2+}), pH 7.4, 150mM NaCl, 0.02% sodium azide and 50% glycerol.

Immunogen: The antiserum was produced against synthesized peptide derived from internal of human OXER1.

Purification: The antibody was affinity-purified from

rabbit antiserum by affinity-chromatography using epitope-specific immunogen.

Specificity: OXER1 antibody detects endogenous levels of total OXER1 protein.

Reactivity: Human

Applications: WB: 1:500~1:1000 IF: 1:100~1:500

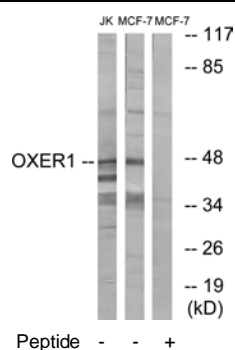
ELISA: 1:10000

References:

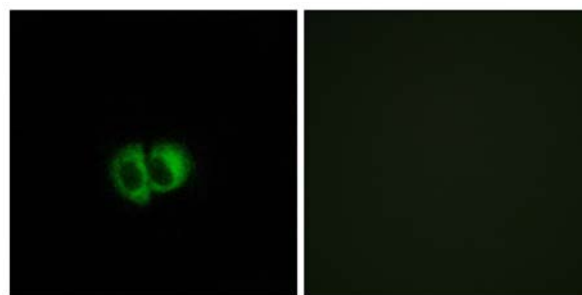
Hosoi T., J. Biol. Chem. 277:31459-31465(2002).

Jones C.E., Mol. Pharmacol. 63:471-477(2003).

Takeda S., FEBS Lett. 520:97-101(2002).



Western blot analysis of extracts from Jurkat cells and MCF-7 cells, using OXER1 antibody.



Immunofluorescence analysis of MCF-7 cells, using OXER1 antibody.

For Research Use Only