



MBP-Tag Mouse Monoclonal Antibody

E12-008

Catalog Number: E12-008**Amount:** 100µg/100µl**Clone Number:** 7G2

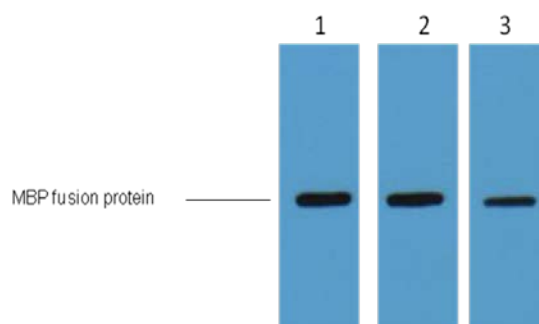
Background: Maltose binding protein (MBP) is a useful affinity tag that can increase the expression level and solubility of the MBP tagged protein. It promotes proper folding of the fusion protein, and it can be also used to prevent an insoluble form (inclusion bodies). MBP is used to increase the solubility of recombinant proteins expressed in *E. coli*. In these systems, the protein of interest is often expressed as a MBP-fusion protein, preventing aggregation of the protein of interest.

Form of Antibody: Mouse IgG1 in phosphate buffered saline (without Mg^{2+} and Ca^{2+}), pH 7.4, 150mM NaCl, 0.02% sodium azide and 50% glycerol.

Storage/Stability: Store at -20°C/1 year

Specificity/Sensitivity: The MBP tag antibody can recognize MBP and MBP tag fusion proteins.

Applications: WB: 1:5,000



0.5ug MBP fusion protein+ Primary antibody dilution at 1:3,000 (lane 1) , 1:5,000 (lane 2) and 1:10,000 (lane 3).

For Research Use Only