



α -tubulin Mouse Monoclonal Antibody

E12-049

Catalog Number: E12-049

Amount: 100 μ g/100 μ l

Clone Number: 7C11

Background: The nuclear lamina consists of a two-dimensional matrix of proteins located next to the inner nuclear membrane. The lamin family of proteins make up the matrix and are highly conserved in evolution. During mitosis, the lamina matrix is reversibly disassembled as the lamin proteins are phosphorylated. Lamin proteins are thought to be involved in nuclear stability, chromatin structure and gene expression. Vertebrate lamins consist of two types, A and B. This gene encodes one of the two B type proteins,

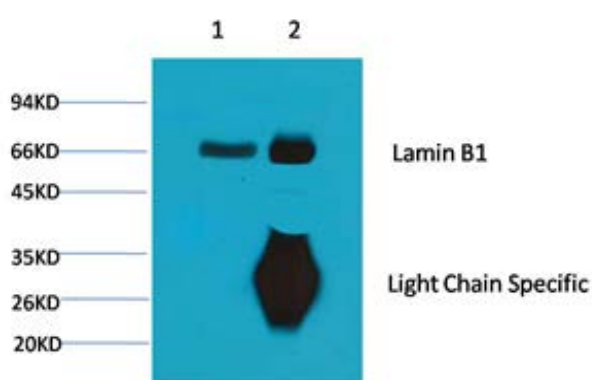
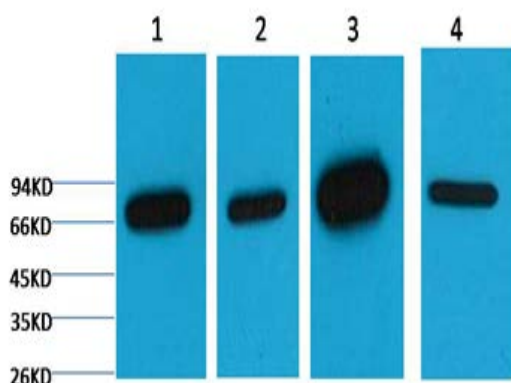
Form of Antibody: Mouse IgG1 in phosphate buffered saline (without Mg²⁺ and Ca²⁺), pH 7.4, 150mM NaCl, 0.02% sodium azide and 50% glycerol.

Storage/Stability: Store at -20°C/1 year. Do not aliquot the antibody.

Specificity/Sensitivity: The α -tubulin antibody can detect endogenous α -tubulin protein

Reactivity: H, R, M

Applications: WB: 1:2,000-5,000 IP:1:200



Western blot analysis of 1) HepG2, 2) 293T, 3) Mouse Brain Tissue, 4) Rat Brain Tissue with E12-049 diluted at 1:5,000.

1、Input: Mouse Brain Tissue Lysate

2、IP product: IP dilute 1:200

Western blot analysis: primary antibody : E12-049 1:5,000

Secondary antibody: Goat anti-Mouse IgG, Light chain specific(S003), 1:5,000

For Research Use Only