



α -tubulin Rabbit Polyclonal Antibody

E12-054

Catalog Number: E12-054**Amount:** 100 μ g/100 μ l

Background: Tubulin is one of several members of a small family of globular proteins. The most common members of the tubulin family are α -tubulin and β -tubulin, the proteins that make up microtubules. Each has a molecular weight of approximately 55 kiloDaltons. Microtubules are assembled from dimers of α - and β -tubulin.

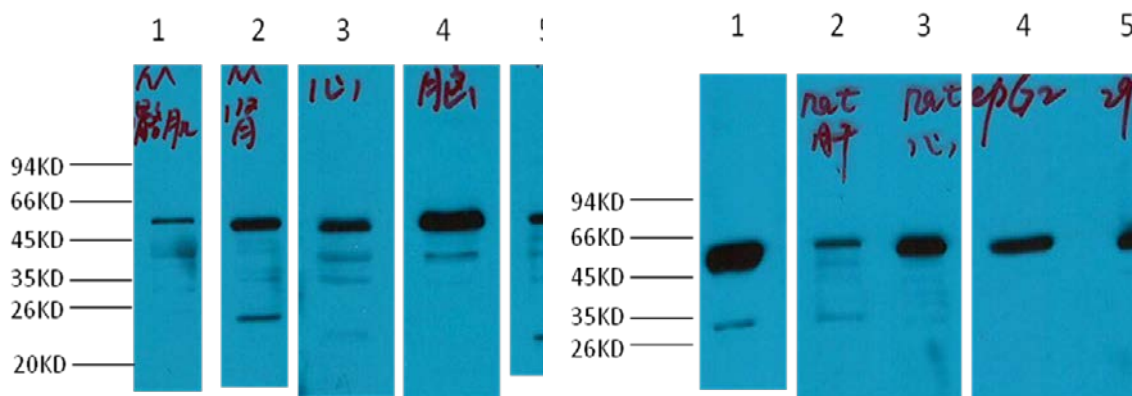
Form of Antibody: IgG1 in phosphate buffered saline (without Mg²⁺ and Ca²⁺), pH 7.4, 150mM NaCl, 0.02% sodium azide and 50% glycerol.

Storage/Stability: Store at -20°C/1 year. Do not aliquot the antibody.

Specificity/Sensitivity: Antibody can detect endogenous α -tubulin protein.

Reactivity: H, R, M

Applications: WB: 1:2,000 IHC: 1:200



Western blot analysis of 1) Mouse skeletal muscle tissue, 2) Mouse kidney tissue, 3) Mouse Heart Tissue, 4) Mouse brain tissue, 5) Mouse Liver tissue with α -tubulin Rabbit pAb diluted at 1:2,000.

Western blot analysis of 1) Rat Brain tissue, 2) Rat Liver tissue, 3) Rat Heart Tissue, 4) HepG2, 5) 293T, with α -tubulin Rabbit pAb diluted at 1:2,000.

For Research Use Only