



Plant GST Rabbit Polyclonal Antibody

E12-060

Catalog Number: E12-060

Amount: 100µg/100µl

Background: The soluble glutathione transferases (GSTs) are encoded by a large and diverse gene family in plants. GSTs are predominantly expressed in the cytosol, where their GSH-dependent catalytic functions include the conjugation and resulting detoxification of herbicides, the reduction of organic hydroperoxides formed during oxidative stress and the isomerization of maleylacetoacetate to fumarylacetoacetate, a key step in the catabolism of tyrosine. GSTs also have non-catalytic roles, binding flavonoid natural products in the cytosol prior to their deposition in the vacuole.

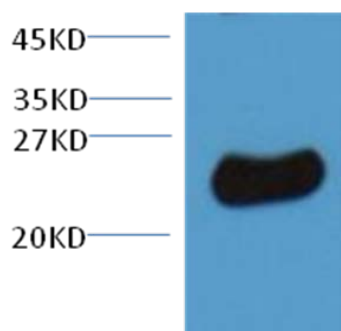
Form of Antibody: Rabbit IgG in phosphate buffered saline (without Mg^{2+} and Ca^{2+}), pH 7.4, 150mM NaCl, 0.02% sodium azide and 50% glycerol.

Storage/Stability: Store at -20 °C/1 year

Specificity/Sensitivity: The Plant GST rabbit polyclonal antibody can recognize endogenous Plant GST proteins (24KD).

Reactivity: Nicotiana tabacum

Applications: WB: 1:1,000-3,000



10ug total Nicotiana tabacum lysate + primary antibody
dilute at 1:3000.

For Research Use Only