



ErbB-2/HER-2 Mouse Monoclonal Antibody

E12-065

Catalog Number: E12-065**Amount:** 100µg/100µl**Clone Number:** 11H9

Background: ErbB 2 is a receptor tyrosine kinase of the ErbB 2 family. It is closely related in structure to the epidermal growth factor receptor. ErbB 2 oncoprotein is detectable in a proportion of breast and other adenocarcinomas, as well as transitional cell carcinomas. In the case of breast cancer, expression determined by immunohistochemistry has been shown to be associated with poor prognosis.

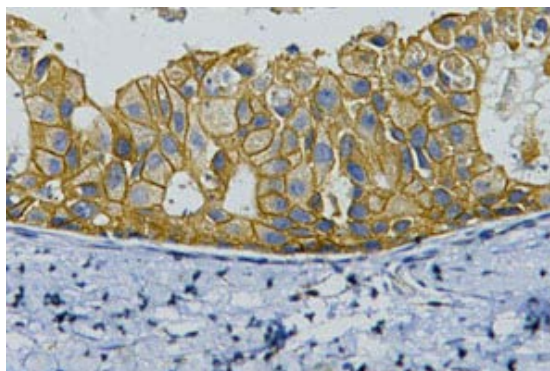
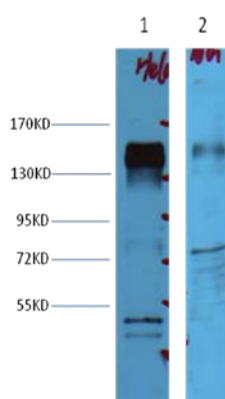
Form of Antibody: Mouse IgG1 in phosphate buffered saline (without Mg^{2+} and Ca^{2+}), pH 7.4, 150mM NaCl, 0.02% sodium azide and 50% glycerol.

Storage/Stability: Store at -20°C/1 year

Specificity/Sensitivity: The ErbB-2/HER-2 Mouse Monoclonal antibody detects endogenous ErbB-2/HER-2 proteins (~138KD).

Reactivity: Human, Mouse, Rat

Applications: WB: 1:2,000-4,000 IHC: 1:200



Western blot analysis of Hela cell lysate (lane 1) and mouse brain (lane 2) with ErbB-2/HER-2 mAb diluted at 1:4,000.

IHC staining of human breast cancer tissue with ErbB-2/HER-2 mouse mAb(11H9) diluted at 1:200.

For Research Use Only