



Ki 67 Mouse Monoclonal Antibody

E12-087

Catalog Number: E12-087**Amount:** 100µg/100µl**Clone Number:** 4A8

Background: Antigen KI-67 is a nuclear protein that is associated with and may be necessary for cellular proliferation. Furthermore it is associated with ribosomal RNA transcription. Inactivation of antigen KI-67 leads to inhibition of ribosomal RNA synthesis. The Ki-67 protein (also known as MKI67) is a cellular marker for proliferation. It is strictly associated with cell proliferation. During interphase, the Ki-67 antigen can be exclusively detected within the cell nucleus, whereas in mitosis most of the protein is relocated to the surface of the chromosomes. Ki-67 protein is present during all active phases of the cell cycle (G1, S, G2, and mitosis), but is absent from resting cells (G0).

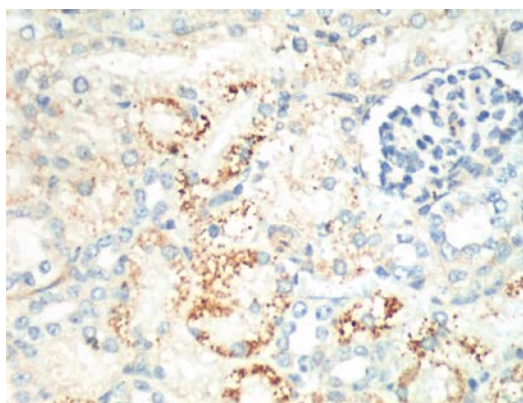
Form of Antibody: Mouse IgG1 in phosphate buffered saline (without Mg²⁺ and Ca²⁺), pH 7.4, 150mM NaCl, 0.02% sodium azide and 50% glycerol.

Storage/Stability: Store at -20°C/1 year. Do not aliquot the antibody.

Specificity/Sensitivity: The Ki 67 Mouse Monoclonal antibody detects endogenous Ki 67 proteins

Reactivity: H,M,R

Applications: IHC: 1:200



IHC staining of Mouse Kidney tissue with Ki 67 mouse mAb(4A8) diluted at 1:200.

For Research Use Only