



## ErbB-2/HER-2 Mouse Monoclonal Antibody

E12-104

**Catalog Number:** E12-104**Amount:** 100µg/100µl**Clone Number:** 3C9

**Background:** ErbB 2 is a receptor tyrosine kinase of the ErbB 2 family. It is closely related in structure to the epidermal growth factor receptor. ErbB 2 oncoprotein is detectable in a proportion of breast and other adenocarcinomas, as well as transitional cell carcinomas. In the case of breast cancer, expression determined by immunohistochemistry has been shown to be associated with poor prognosis

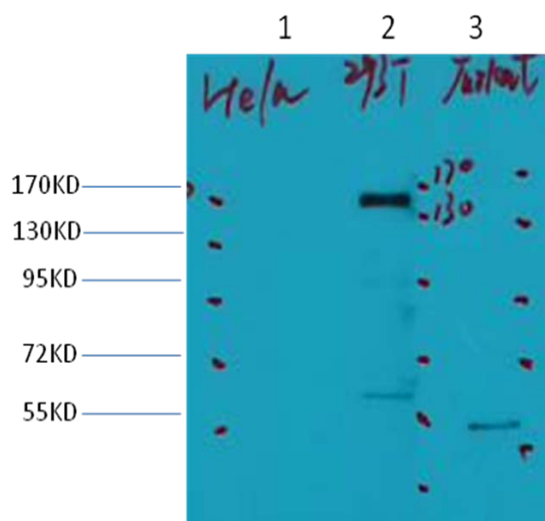
**Form of Antibody:** Mouse IgG1 in phosphate buffered saline (without Mg<sup>2+</sup> and Ca<sup>2+</sup>), pH 7.4, 150mM NaCl, 0.02% sodium azide and 50% glycerol.

**Storage/Stability:** Store at -20°C/1 year. Do not aliquot the antibody.

**Specificity/Sensitivity:** ErbB-2 Mouse Monoclonal antibody detects endogenous ErbB-2 proteins.

**Reactivity:** H

**Applications:** WB: 1:1,000



Western blot analysis of 1) HeLa, 2) 293, 3) Jurkat, with ErbB-2 Mouse mAb diluted at 1:2,000.

**For Research Use Only**