



## Glucocorticoid receptor/GR Rabbit Polyclonal Antibody

E12-113

**Catalog Number:** E12-113**Amount:** 100µg/100µl

**Background:** The glucocorticoid receptor (GR or GCR). The GR is expressed in almost every cell in the body and regulates genes controlling the development, metabolism, and immune response. Because the receptor gene is expressed in several forms, it has many different (pleiotropic) effects in different parts of the body.

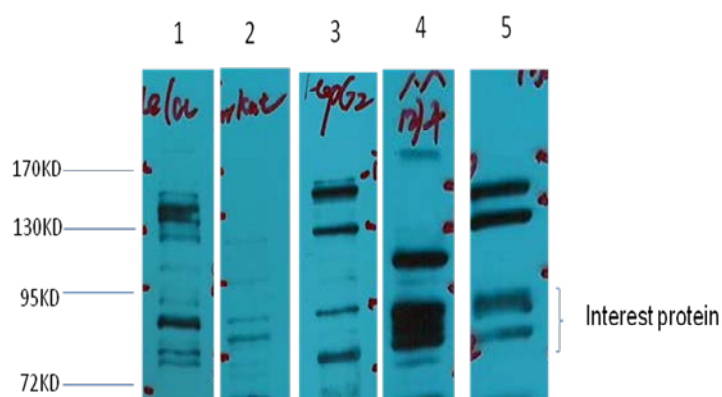
**Form of Antibody:** IgG1 in phosphate buffered saline (without Mg<sup>2+</sup> and Ca<sup>2+</sup>), pH 7.4, 150mM NaCl, 0.02% sodium azide and 50% glycerol.

**Storage/Stability:** Store at -20°C/1 year. Do not aliquot the antibody.

**Specificity/Sensitivity:** The GR Rabbit Polyclonal antibody detects endogenous GR proteins..

**Reactivity:** H,M,R

**Applications:** WB: 1:1,000-3,000



Western blot analysis of 1) Hela, 2) Jurkat, 3) HepG2, 4) Mouse Liver tissue, 5) Rat Brain tissue, with GR Rabbit pAb diluted at 1:2,000.

**For Research Use Only**