



Cleaved PARP Mouse Monoclonal Antibody

E12-160

Catalog Number: E12-160

Amount: 100µg/100µl

Clone Number: M4

Background: Poly [ADP-ribose] polymerase 1 (PARP-1) also known as NAD⁺ ADP-ribosyltransferase 1 or poly[ADP-ribose] synthase 1 is an enzyme that in humans is encoded by the PARP1 gene. PARP1 has a role in repair of single-stranded DNA (ssDNA) breaks. Knocking down intracellular PARP1 levels with siRNA or inhibiting PARP1 activity with small molecules reduces repair of ssDNA breaks. In the absence of PARP1, when these breaks are encountered during DNA replication, the replication fork stalls, and double-strand DNA (dsDNA) breaks accumulate.

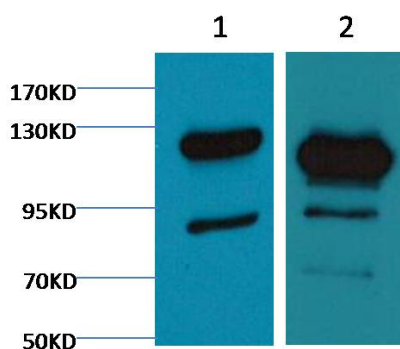
Form of Antibody: Mouse IgG1 in phosphate buffered saline (without Mg²⁺ and Ca²⁺), pH 7.4, 150mM NaCl, 0.02% sodium azide and 50% glycerol.

Storage/Stability: Store at -20°C/1 year

Specificity/Sensitivity: Antibody can detect endogenous pro and active PARP protein.

Reactivity: H

Applications: WB: 1:1,000-3,000



Western blot analysis of 1) Jurkat ,2) HeLa, with E12-160 diluted at 1:2,000.

For Research Use Only