



Histone H3(Acetyl Lys36) Rabbit Polyclonal Antibody

E12-261

Catalog Number: E12-261**Amount:** 100µg/100µl**Alternative Names:** H3 histone antibody, HIST1H3A antibody, Histone cluster 1, H3a antibody

Background: Histone H3 is one of the five main histone proteins involved in the structure of chromatin in eukaryotic cells. Core component of nucleosome. Nucleosomes wrap and compact DNA into chromatin, limiting DNA accessibility to the cellular machineries which require DNA as a template. Histones thereby play a central role in transcription regulation, DNA repair, DNA replication and chromosomal stability.

Form of Antibody: Purified Rabbit IgG, 1mg/ml in PBS pH7.4, containing 0.02% sodium azide as Preservative and 50% Glycerol. .

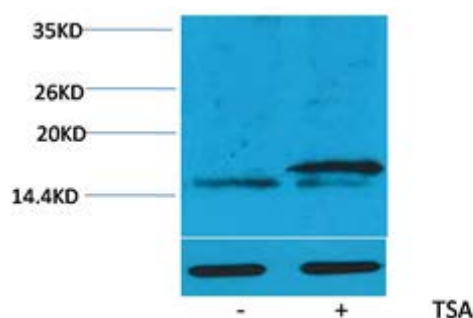
Storage/Stability: Store at -20°C/1 year. Do not aliquot the antibody.

Specificity/Sensitivity: The Histone H3(Acetyl Lys36) Rabbit Polyclonal Antibody can detects endogenous Histone H3 (Acetyl Lys36) protein

Reactivity: H, R, M

Applications: WB: 1:200-500

Molecular Weight: 15-17KD



Western blot analysis of extracts from Hela cells, untreated (-) or treated with TSA (1µM, 18 hr; +), using Acetyl-Histone H3 (Lys36) Rabbit pAb (upper) E12-2611:2000 and Histone H3 (1G1) Mouse mAb (lower) E12-055 1:2000

For Research Use Only