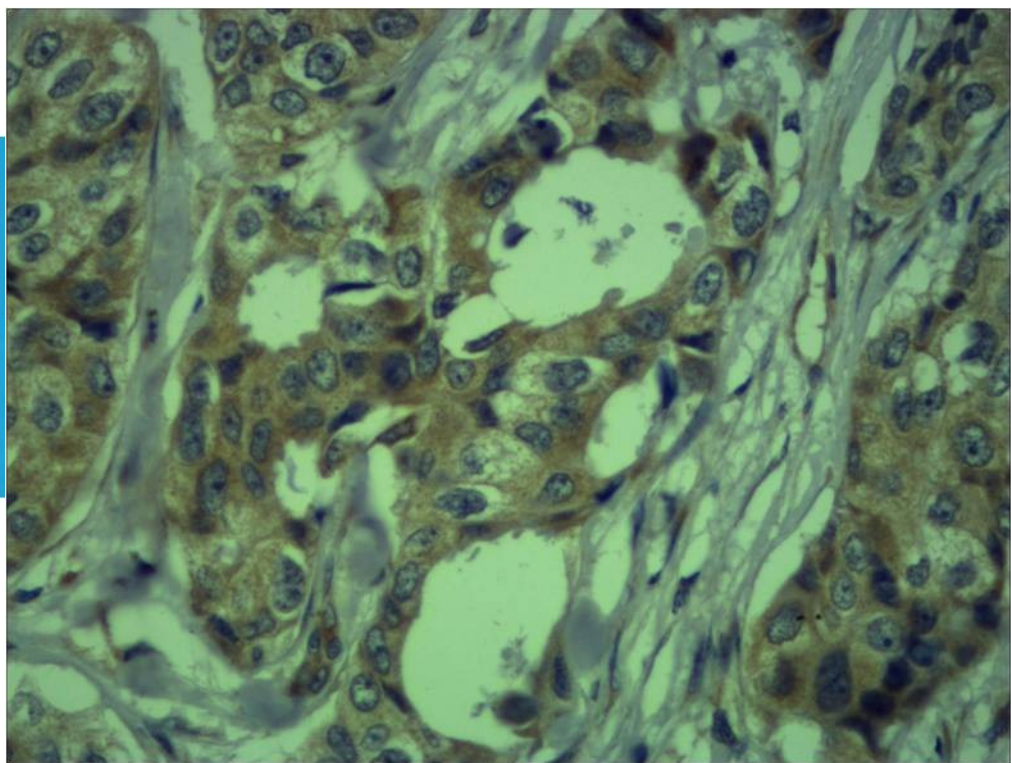
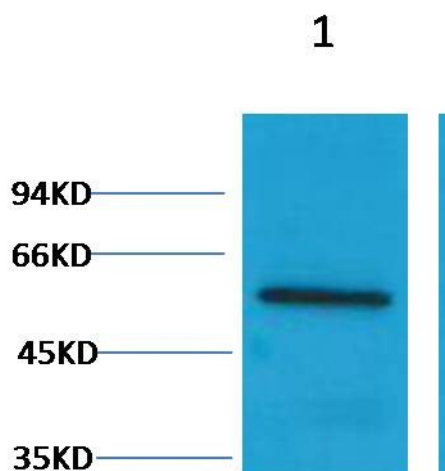




## Vimentin Rabbit Polyclonal Antibody

E12-262

<b>Catalog Number:</b>	E12-262
<b>Amount:</b>	100µg/100µl
<b>Isotype:</b>	IgG
<b>Alternative Names:</b>	FLJ36605 antibody, VIM antibody, VIME antibody
<b>Background:</b>	The cytoskeleton consists of three types of cytosolic fibers: microfilaments (actin filaments), intermediate filaments, and microtubules. Vimentin is a type III intermediate filament (IF) protein that is expressed in mesenchymal cells.
<b>Form of Antibody:</b>	Immunogen Affinity Purified Rabbit IgG, 1mg/ml in PBS pH7.4, containing 0.02% sodium azide as Preservative and 50% Glycerol.
<b>Storage/Stability:</b>	Store at -20°C/1 year. Do not aliquot the antibody.
<b>Specificity/Sensitivity:</b>	Antibody can detect endogenous Vimentin protein.
<b>Reactivity:</b>	H, R, M
<b>Applications:</b>	WB: 1:1,000-2,000      IHC: 1:500-1,000
<b>Molecular Weight:</b>	50-57KD



Western blot analysis of 1) HeLa, 2) Mouse Brain, 3) Rat Brain tissue with Vimentin Rabbit pAb E12-262 diluted at 1:2,000.

Immunohistochemical analysis of paraffin-embedded human breast carcinoma using Vimentin (E12-262) Rabbit pAb diluted at 1:500.

**For Research Use Only**

**For Research Use Only**