



Mouse anti-Human CD13, Purified mAb

E16HU013

Catalog Number: E16HU013-100 , E16HU013-500

Amount: 100 Tests, 500 Tests

Form of Antibody: Phosphate-buffered solution, pH 7.4, containing 0.09% sodium azide

Storage/Stability: Store at 4°C.DO NOT FREEZE. LIGHT SENSITIVE MATERIAL.

Description: 4AB-F10 reacts with CD13, 150 kDa aminopeptidase N (APN). CD13 is expressed on the surface of early committed progenitors and mature granulocytes and monocytes (GM-CFU), but not on lymphocytes, platelets or erythrocytes. It is also expressed on endothelial cells, epithelial cells, bone marrow stroma cells, and osteoclasts, as well as a small proportion of LGL lymphocytes. CD13 acts as a receptor for specific strains of RNA viruses and plays an important function in the interaction between human cytomegalovirus (CMV) and its target cells.

Isotype: Mouse IgG1

Clone : 4AB-F10

Reactivity: Human,Not yet tested in other species.

Applications: FCM IF

Experimental Methods:

- 1.Take 100 μ l peripheral blood anticoagulated by EDTA and add to the bottom of 5ml tube;
- 2.Add appropriate amount of antibody to the bottom of flow tube mixing with the whole blood, incubate for 30 minutes at room temperature;
- 3.Add 2 ml $1\times$ RBC lysis buffer, incubate for 10 minutes after mixing, dissolve red blood cells (recommended: RBC lysing Solution $10\times$, Cat.: FXP001);
- 4.Sample tube is set to 1000 rpm centrifugation for 5 minutes, discard the supernatant;
- 5.Add 2 ml PBS wash buffer to resuspend the cells, then 1000 rpm centrifugation for 5 minutes, discard the supernatant;
- 6.Add appropriate amount of fluorescent-labeled anti-mouse IgGs and incubate for 20 minutes away from light at room temperature.
- 7.Repeat step 5.
- 8.Add 0.5 ml PBS wash buffer to resuspend the cells and detect by flow cytometry (sample should be determined on the day on the machine and can also be added fixation overnight at 4 $^{\circ}$ C then measured).

[PBS wash buffer: PBS +1% FBS +0.1% NaN₃; Cat.: FXP005]

[Cell fixation: 2% formaldehyde solution]

Notices:

- 1.Since applications vary, each investigator should titrate the reagent to obtain optimal results.
- 2.Caution: Sodium azide yields highly toxic hydrazoic acid under acidic conditions. Dilute azide compounds in running water before discarding to avoid accumulation of potentially explosive deposits in plumbing;
- 3.If the sample can not be timely analysis, please fixed;
- 4.For research use only, not for diagnostic or therapeutic use.

References:

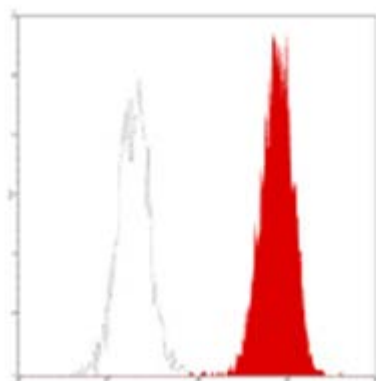
- 1.Look AT et al. (1989) J.Clin.Invest. 83:1299-1307.
- 2.Favaloro, E et al. (1990) Brit. J. Heamatol. 74:385.
- 3.Barclay, N et al. (1993) The leucocyte Antigen Factsbook, CD13 section , Academic Press Inc. San Diego, CA.
- 4.Riemann D et al. (1997) J. Immunol. 158:3425-32.

Related products:

E16HF013	Mouse Anti-Human CD13, FITC Conjugated mAb	FCM	IF
E16HP013	Mouse Anti-Human CD13, PE Conjugated mAb	FCM	IF

For Research Use Only

Profile of peripheral blood granulocytes analyzed by flow cytometry, PE labeled goat anti-mouse IgG as secondary antibody staining.



Human peripheral blood granulocytes analyzed with Purified CD13 mAb, followed by anti-mouse IgGs-PE