



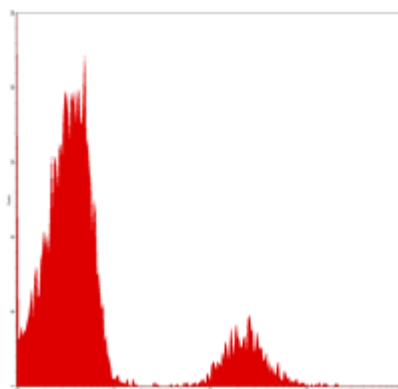
Mouse anti-Human CD20, Purified mAb

E16HU020

Catalog Number:	E16HU020-100 ,E16HU020-500		
Amount:	100 Tests, 500 Tests		
Form of Antibody:	Phosphate-buffered solution, pH 7.4, containing 0.09% sodium azide		
Storage/Stability:	Store at 4°C.DO NOT FREEZE. LIGHT SENSITIVE MATERIAL.		
Description:	4ABCA/B20 reacts with human CD20 (B1), 37/35 kDa protien, which is expressed on pre-B cells and mature B cells but not on plasma cells. The CD20 antigen can also be detected at low levels on a subset of peripheral blood T-cells. CD20 regulates B-cell activation and proliferation by regulating transmembrane Ca++ conductance and cell-cycle progression.This clone is cross reactive with non-human primate . * CD20 antibody has been used for lymphoma diagnosis and therapy.		
Isotype:	Mouse IgG2a		
Clone :	4ABCA/B20		
Reactivity:	Human,Not yet tested in other species.		
Applications:	FCM IF		
Experimental Methods:	1.Take 100 µl peripheral blood anticoagulated by EDTA and add to the bottom of 5ml tube; 2.Add appropriate amount of antibody to the bottom of flow tube mixing with the whole blood, incubate for 30 minutes at room temperature; 3.Add 2 ml1×RBC lysing buffer, incubate for 10 minutes after mixing, dissolve red blood cells (recommended: RBC lysing Solution 10×,Cat.: FXP001); 4.Sample tube is set to 1000 rpm centrifugation for 5 minutes, discard the supernatant; 5.Add 2 ml PBS wash buffer to resuspend the cells, then 1000 rpm centrifugation for 5 minutes, discard the supernatant; 6.Add appropriate amount of fluorescent-labeled anti-mouse IgGs and incubate for 20 minutes away from light at room temperature. 7.Repeat step 5. 8.Add 0.5 ml PBS wash buffer to resuspend the cells and detect by flow cytometry (sample should be determined on the day on the machine and can also be added fixation overnight at 4 °C then measured). [PBS wash buffer: PBS +1% FBS +0.1% NaN ₃ ; Cat.: FXP005] [Cell fixation: 2% formaldehyde solution]		
Notices:	1.Since applications vary, each investigator should titrate the reagent to obtain optimal results. 2.Caution: Sodium azide yields highly toxic hydrazoic acid under acidic conditions. Dilute azide compounds in running water before discarding to avoid accumulation of potentially explosive deposits in plumbing; 3.If the sample can not be timely analysis, please fixed; 4.For research use only, not for diagnostic or therapeutic use.		
References:	1.Ling NR et al., eds. (1987) Leucocyte Typing III: White Cell Differentiation Antigens, Oxford University Press, New York. 303-334 2.Hultin LE et al., (1993) Cytometry 14:196-204. 3.Deans JP (2002) Immunology 107:176-182		
Related products:	E16HF020	Mouse Anti-Human CD20, FITC Conjugated mAb	FCM IF
	E16HP020	Mouse Anti-Human CD20, PE Conjugated mAb	FCM IF
	E16HC020	Mouse Anti-Human CD20, PE-Cy5 Conjugated mAb	FCM IF
	E16HA020	Mouse Anti-Human CD20, APC Conjugated mAb	FCM IF

For Research Use Only

Profile of peripheral blood lymphocytes analyzed by flow cytometry, PE labeled goat anti-mouse IgG as secondary antibody staining.



Human peripheral blood lymphocytes analyzed with Purified CD20 mAb, followed by anti-mouse IgGs-PE