



Mouse anti-Human CD45RA, Purified mAb

E16HU0453

Catalog Number: E16HU0453-100 , E16HU0453-500

Amount: 100 Tests, 500 Tests

Form of Antibody: Phosphate-buffered solution, pH 7.4, containing 0.09% sodium azide

Storage/Stability: Store at 4°C.DO NOT FREEZE. LIGHT SENSITIVE MATERIAL.

Description: 4AH1100 reacts with the 220 kDa isoform A of CD45. This is clustered as CD45RA, and is expressed on naive/resting T cells and on medullary thymocytes. In comparison, CD45RO is expressed on memory/activated T cells and cortical thymocytes. CD45RA and CD45RO are useful for discriminating between naive and memory T cells in the study of the immune system.

Isotype: Mouse IgG2b

Clone : 4AH1100

Reactivity: Human,Not yet tested in other species.

Applications: FC IHC IP IF WB

Experimental Methods:

- 1.Take 100 μ l peripheral blood anticoagulated by EDTA and add to the bottom of 5ml tube;
- 2.Add appropriate amount of antibody to the bottom of flow tube mixing with the whole blood, incubate for 30 minutes at room temperature;
- 3.Add 2 ml $1\times$ RBC lysis buffer, incubate for 10 minutes after mixing, dissolve red blood cells (recommended: RBC lysing Solution $10\times$, Cat.: FXP001);
- 4.Sample tube is set to 1000 rpm centrifugation for 5 minutes, discard the supernatant;
- 5.Add 2 ml PBS wash buffer to resuspend the cells, then 1000 rpm centrifugation for 5 minutes, discard the supernatant;
- 6.Add appropriate amount of fluorescent-labeled anti-mouse IgGs and incubate for 20 minutes away from light at room temperature.
- 7.Repeat step 5.
- 8.Add 0.5 ml PBS wash buffer to resuspend the cells and detect by flow cytometry (sample should be determined on the day on the machine and can also be added fixation overnight at 4 °C then measured).

[PBS wash buffer: PBS +1% FBS +0.1% NaN₃; Cat.: FXP005]

[Cell fixation: 2% formaldehyde solution]

Notices:

- 1.Since applications vary, each investigator should titrate the reagent to obtain optimal results.
- 2.Caution: Sodium azide yields highly toxic hydrazoic acid under acidic conditions. Dilute azide compounds in running water before discarding to avoid accumulation of potentially explosive deposits in plumbing;
- 3.If the sample can not be timely analysis, please fixed;
- 4.For research use only, not for diagnostic or therapeutic use.

References:

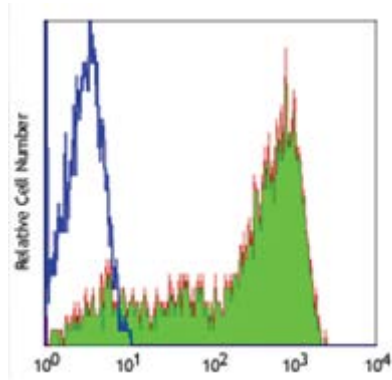
1. Knapp, W et al., eds. (1989) Leucocyte Typing IV: White Cell Differentiation Antigens, Oxford University Press, New York.
2. Trowbridge, IS and Thomas, ML. (1993) Annu. Rev. Immunol. 12:85.
3. Pulido, R et al., (1988) J. Immunol. 140:3851.
4. Roach, T et al., (1997) Curr. Biol. 7:408.

Related products:

E16HF0453	Mouse Anti-Human CD45RA, FITC Conjugated mAb	FC	IHC	IP	IF	WB
E16HP0453	Mouse Anti-Human CD45RA, PE Conjugated mAb	FC	IHC	IP	IF	WB
E16HB0453	Mouse Anti-Human CD45RA, Biotin Conjugated mAb	FC	IHC	IP	IF	WB

For Research Use Only

Profile of human platelet analyzed by flow cytometry, PE labeled goat anti-mouse IgG as secondary antibody staining.



Human peripheral blood lymphocytes analyzed with Purified CD45RA mAb, followed by anti-mouse IgGs-FITC