



Mouse anti-Human CD45RO, Purified mAb

E16HU0456

Catalog Number: E16HU0456-100 , E16HU0456-500

Amount: 100 Tests, 500 Tests

Form of Antibody: Phosphate-buffered solution, pH 7.4, containing 0.09% sodium azide

Storage/Stability: Store at 4°C.DO NOT FREEZE. LIGHT SENSITIVE MATERIAL.

Description: 4AUCHL1 reacts with an isoform of CD45, a 180 kDa molecule clustered as CD45RO. CD45RO is expressed on memory/activated T cells and cortical thymocytes, in comparison with CD45RA, which is expressed on naive/resting T cells and on medullary thymocytes. CD45RO and CD45RA molecules are important to discriminate naive and memory T cells in the study of the immune system.

Isotype: Mouse IgG2a

Clone : 4AUCHL1

Reactivity: Human,Not yet tested in other species.

Applications: FCM IF

Experimental Methods:

- 1.Take 100 μ l peripheral blood anticoagulated by EDTA and add to the bottom of 5ml tube;
- 2.Add appropriate amount of antibody to the bottom of flow tube mixing with the whole blood, incubate for 30 minutes at room temperature;
- 3.Add 2 ml $1\times$ RBC lysis buffer, incubate for 10 minutes after mixing, dissolve red blood cells (recommended: RBC lysing Solution $10\times$, Cat.: FXP001);
- 4.Sample tube is set to 1000 rpm centrifugation for 5 minutes, discard the supernatant;
- 5.Add 2 ml PBS wash buffer to resuspend the cells, then 1000 rpm centrifugation for 5 minutes, discard the supernatant;
- 6.Add appropriate amount of fluorescent-labeled anti-mouse IgGs and incubate for 20 minutes away from light at room temperature.
- 7.Repeat step 5.
- 8.Add 0.5 ml PBS wash buffer to resuspend the cells and detect by flow cytometry (sample should be determined on the day on the machine and can also be added fixation overnight at 4 $^{\circ}$ C then measured).

[PBS wash buffer: PBS +1% FBS +0.1% NaN₃; Cat.: FXP005]

[Cell fixation: 2% formaldehyde solution]

Notices:

- 1.Since applications vary, each investigator should titrate the reagent to obtain optimal results.
- 2.Caution: Sodium azide yields highly toxic hydrazoic acid under acidic conditions. Dilute azide compounds in running water before discarding to avoid accumulation of potentially explosive deposits in plumbing;
- 3.If the sample can not be timely analysis, please fixed;
- 4.For research use only, not for diagnostic or therapeutic use.

References:

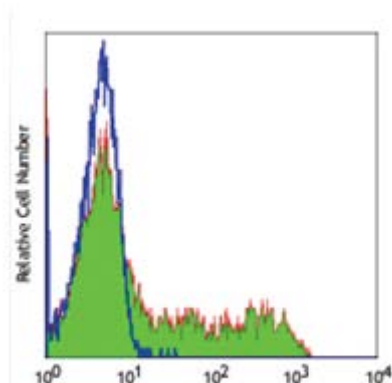
1. Knapp, W et al., eds. (1989) Leucocyte Typing IV : White Cell Differentiation Antigens, Oxford University Press, New York.
2. Trowbridge, IS and Thomas, ML. (1993) Annu. Rev. Immunol. 12: 85.
3. Pulido, R et al., (1988) J. Immunol. 140:3851.
4. Smith, SH et al., (1986) Immunology 58:63.

Related products:

E16HF0456	Mouse Anti-Human CD45RO, FITC Conjugated mAb	FCM	IF
E16HP0456	Mouse Anti-Human CD45RO, PE Conjugated mAb	FCM	IF
E16HC0456	Mouse Anti-Human CD45RO, PE-Cy5 Conjugated mAb	FCM	IF

For Research Use Only

Profile of peripheral blood lymphocytes analyzed by flow cytometry, FITC labeled goat anti-mouse IgG as secondary antibody staining.



Human peripheral blood lymphocytes analyzed with Purified CD45RO mAb, followed by anti-mouse IgGs-FITC