



Mouse anti-Human CD55, Purified mAb

E16HU056

Catalog Number: E16HU056-100 , E16HU056-100

Amount: 100 Tests, 500 Tests

Form of Antibody: Phosphate-buffered solution, pH 7.4, containing 0.09% sodium azide

Storage/Stability: Store at 4°C.DO NOT FREEZE. LIGHT SENSITIVE MATERIAL.

Description: 4AMEM188 reacts with CD56, a 175-220 kDa Neural Cell Adhesion Molecule (NCAM), expressed on 10-25% of peripheral blood lymphocytes, including all CD16+ NK cells and approximately 5% of CD3+ lymphocytes, referred to as NKT cells. It also is present at brain and neuromuscular junctions, certain LGL leukemias, small cell lung carcinomas, neuronally derived tumors, myeloma and myeloid leukemias. CD56 (NCAM) is involved in neuronal homotypic cell adhesion which is implicated in neural development, and in cell differentiation during embryogenesis.

Isotype: Mouse IgG2a

Clone : 4AMEM188

Reactivity: Human,Not yet tested in other species.

Applications: FCM IF

Experimental Methods:

- 1.Take 100 μ l peripheral blood anticoagulated by EDTA and add to the bottom of 5ml tube;
- 2.Add appropriate amount of antibody to the bottom of flow tube mixing with the whole blood, incubate for 30 minutes at room temperature;
- 3.Add 2 ml $1\times$ RBC lysis buffer, incubate for 10 minutes after mixing, dissolve red blood cells (recommended: RBC lysing Solution $10\times$, Cat.: FXP001);
- 4.Sample tube is set to 1000 rpm centrifugation for 5 minutes, discard the supernatant;
- 5.Add 2 ml PBS wash buffer to resuspend the cells, then 1000 rpm centrifugation for 5 minutes, discard the supernatant;
- 6.Add appropriate amount of fluorescent-labeled anti-mouse IgGs and incubate for 20 minutes away from light at room temperature.
- 7.Repeat step 5.
- 8.Add 0.5 ml PBS wash buffer to resuspend the cells and detect by flow cytometry (sample should be determined on the day on the machine and can also be added fixation overnight at 4 °C then measured).

[PBS wash buffer: PBS +1% FBS +0.1% NaN₃; Cat.: FXP005]

[Cell fixation: 2% formaldehyde solution]

Notices:

- 1.Since applications vary, each investigator should titrate the reagent to obtain optimal results.
- 2.Caution: Sodium azide yields highly toxic hydrazoic acid under acidic conditions. Dilute azide compounds in running water before discarding to avoid accumulation of potentially explosive deposits in plumbing;
- 3.If the sample can not be timely analysis, please fixed;
- 4.For research use only, not for diagnostic or therapeutic use.

References:

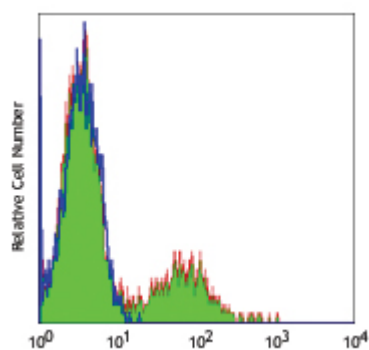
1. Knapp, W et al., eds. (1989) Leucocyte Typing IV: White Cell Differentiation Antigens, Oxford University Press, New York.
2. Lanier LL . et al. (1991) J. Immunol. 146:4421-4426.
3. Campbell, JJ et al. (2001) J. Immunol . 166:6477-6482.
4. Cooper MD et al. (2001) Trends in Immunol. 22:633-640.
5. Galandrini R et al. (2002) Blood. 100:4581-4589.

Related products:

E16HF056	Mouse Anti-Human CD56, FITC Conjugated mAb	FCM	IF
E16HP056	Mouse Anti-Human CD56, PE Conjugated mAb	FCM	IF

For Research Use Only

Profile of peripheral blood lymphocytes analyzed by flow cytometry, FITC labeled goat anti-mouse IgG as secondary antibody staining.



Human peripheral blood lymphocytes analyzed with Purified CD56 mAb, followed by anti-mouse IgGs-FITC