



Rat anti-Mouse CD8, Purified mAb

E16MU008**Catalog Number:** E16MU008-100 ,E16MU008-500**Amount:** 100 Tests, 500 Tests**Form of Antibody:** Phosphate-buffered solution, pH 7.4, containing 0.09% sodium azide**Storage/Stability:** Store at 4°C.DO NOT FREEZE. LIGHT SENSITIVE MATERIAL.**Description:** The 4A2.43 monoclonal antibody reacts with the mouse CD8 molecule which expressed on most thymocytes and mature T lymphocytes Ts / c sub-group cells.CD8 is an antigen co-receptor on T cells that interacts with MHC class I on antigen-presenting cells or epithelial cells.CD8 promotes T cells activation through its association with the TRC complex and protei tyrosine kinase lck.**Isotype:** Rat IgG2b**Clone :** 4A2.43**Reactivity:** Mouse,Not yet tested in other species.**Applications:** FCM**Experimental Methods:**

- 1.Take 100 μ l a certain amount of prepared cells and add to the bottom of 5 ml tube;
- 2.Add 10 μ l labeled antibody to the bottom of flow tube mixing with the whole blood, incubate for 20 minutes at room temperature away from light;
- 3.Add 2 ml PBS wash buffer to resuspend the cells, then1000 rpm centrifugation for 5 minutes, discard the supernatant;
- 4.Add appropriate amount of fluorescent-labeled anti-Rat IgGs and incubate for 20 minutes away from light at room temperature.
- 5.Repeat step 5.
- 6.Add 0.3-0.5 ml PBS wash buffer to resuspend the cells and detect by flow cytometry (sample should be determined in two hours on the machine and can also be added fixation overnight at 4 °C then measured).

[PBS wash buffer: PBS +1% FBS +0.1% NaN₃; Cat.: FXP005]

[Cell fixation: 2% formaldehyde solution]

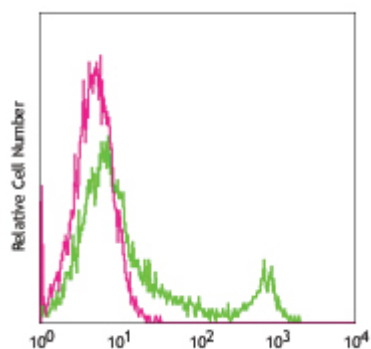
Notices:

- 1.Since applications vary, each investigator should titrate the reagent to obtain optimal results.
- 2.Caution: Sodium azide yields highly toxic hydrazoic acid under acidic conditions. Dilute azide compounds in running water before discarding to avoid accumulation of potentially explosive deposits in plumbing;
- 3.If the sample can not be timely analysis, please fixed;
- 4.For research use only, not for diagnostic or therapeutic use.

Related products:	E16MP008	Rat Anti-Mouse CD8, PE Conjugated mAb	FCM	IF
	E16MF008	Rat Anti-Mouse CD8, FITC Conjugated mAb	FCM	IF
	E16MC008	Rat Anti-Mouse CD8, PE-Cy5 Conjugated mAb	FCM	IF
	E16MA008	Rat Anti-Mouse CD8, APC Conjugated mAb	FCM	IF

For Research Use Only

Profile of Mouse spleen cells analyzed by flow cytometry, FITC labeled goat anti-Rat IgG as secondary antibody staining.



Mouse spleen cells analyzed with Purified mouse CD8 mAb, followed by anti-Rat IgGs-FITC