



## Anti-Human Placental Alkaline Phosphatase Antibody Purified

E16THU003

**Catalog Number:** E16THU003-050 , E16THU003-100

**Amount:** 50 Tests, 100 Tests

**Form of Antibody:** Phosphate-buffered solution, pH 7.4, containing 0.09% sodium azide

**Storage/Stability:** Store at 4°C.DO NOT FREEZE. LIGHT SENSITIVE MATERIAL.

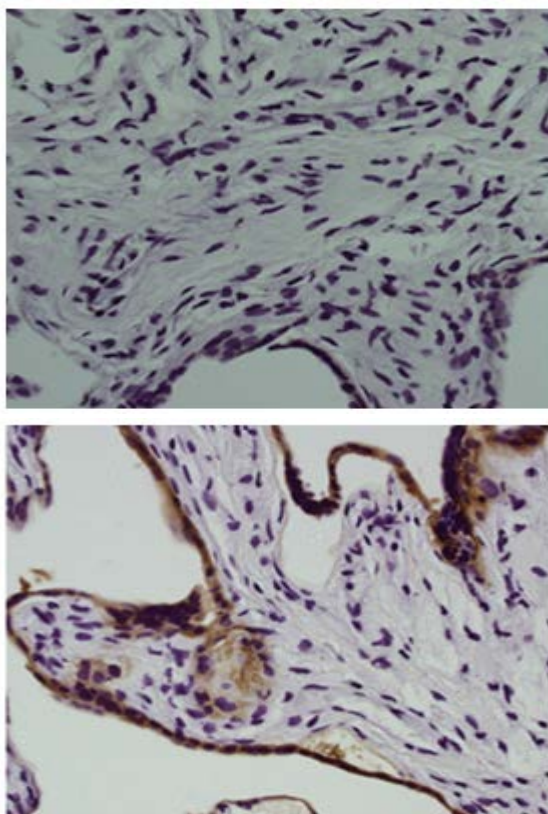
**Description:** The monoclonal antibody 4AH7E8 recognizes human Placental Alkaline Phosphatase (PLAP), a 130 (or 130 with 65 kDa) enzyme expressed by placental syncytiotrophoblastoid cells. This enzyme has slightly different enzyme kinetics from other phosphatases. PLAP can be found anchored to the plasma membrane in addition to the cytoplasm. Expression is found in several germ line cancers; ovarian and testicular. Expression is also present in human embryonic stem cells and bone marrow-derived mesenchymal stromal cells.

**Isotype:** Mouse IgG2a

**Clone :** 4AH7E8

**Reactivity:** Human,Not yet tested in other species.

**Applications:** ELISA; IHC



Immunohistochemistry on formalin-fixed paraffin embedded human placenta using 5 ug/mL Mouse IgG2a Isotype Control (cat. 14-4724) (left) or 5 ug/mL Anti-Human Placental Alkaline Phosphatase Purified (right) followed by biotinylated Anti-Mouse IgG, and DAB visualization. Nuclei are counterstained with hematoxylin.

**For Research Use Only**