



Rabbit anti HA-Tag Polyclonal Antibody

E16TPU003

Catalog Number: E16TPU003-050 , E16TPU003-100

Amount: 50 Tests ,100 Tests

Form of Antibody: Phosphate-buffered solution, pH 7.4, containing 0.09% sodium azide

Storage/Stability: Store at 4°C.DO NOT FREEZE. LIGHT SENSITIVE MATERIAL.

Description: Epitope tags are commonly used for labeling, detection and purification of recombinant proteins. Due to their small size, they are unlikely to affect the biochemical properties of the tagged fusion proteins. The HA tag is derived from an epitope of the influenza hemagglutinin protein, which has been extensively used as a general epitope tag in expression vectors. GeneMay' s Polyclonal antibody, is developed using synthetic peptide C-YPYDVPDYA conjugate to KLH as antigen. It recognizes HA-tagged fusion protein in different expression system.

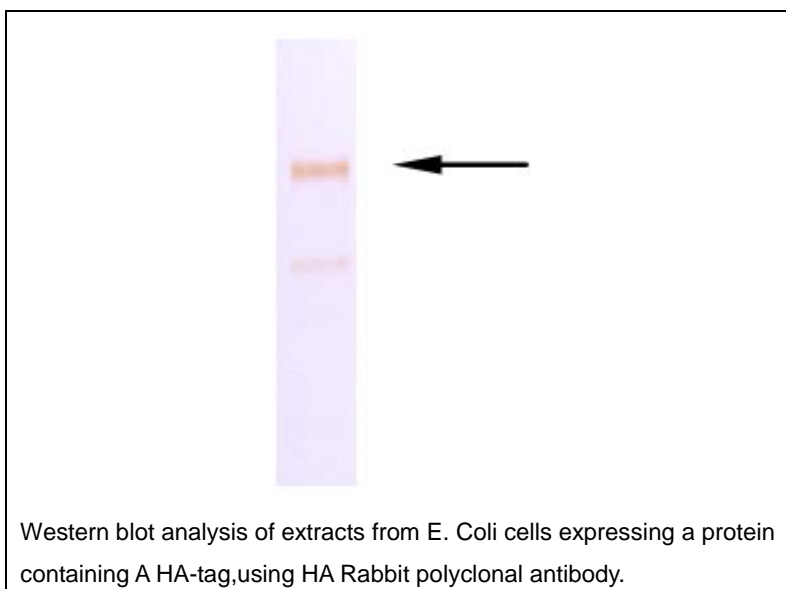
Isotype: Rabbit IgG

Clone : Polyclonal antibody

WB 1:1000

APPLICATION: ELISA 1:4000

IHC N/A



For Research Use Only