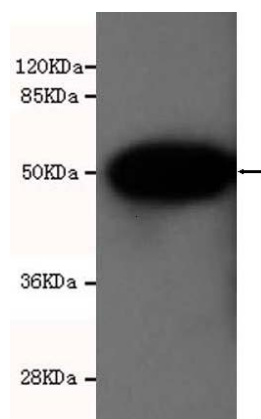




SUMO1 Antibody

E220001

Catalog Number	E220001-1, E220001-2
Amount	50µg/50µl, 100µg/100µl
Description	Mouse monoclonal IgG to SUMO1
GeneBank ID	NM_003352
Immunogen	Recombinant full length of Human SUMO1
Reacts with	Hu
Tested applications	Recommended dilutions. ELISA: 1/5000 - 1/20000. WB: 1/100 - 1/2000.
Cellular localization	Cytoplasm
Relevance	Sumo 1 is a ubiquitin-like protein which binds to a wide range of target proteins. It does not seem to be involved in protein degradation and may function as an antagonist of ubiquitin in the degradation process. Sumo 1 plays a role in a number of cellular processes such as nuclear transport, DNA replication and repair, mitosis, autophagy and signal transduction. It is involved in targeting RANGAP1 to the nuclear pore complex protein RANBP2. Sumo 1 is also known to form a complex with RanGAP1.
Purity	Protein G-Sepharose affinity purified.
Storage buffer	Preservative: 0.02% Sodium Azide and 50% glycerol, 1% BSA, PBS, pH7.4.
Form	Liquid
Storage instructions	Aliquot and store at -20°C. Avoid repeated freeze / thaw cycles.



Sumo1 antibody (E220001) at 1/5000 dilution interacts with recombinant SUMO1 protein with a GST tag. Predicted band size: 50Kda. Observed band size: 50Kda.

For Research Use Only