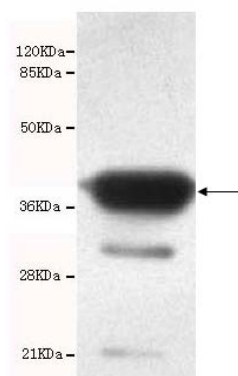




## ACSS1 Antibody

**E220002**

<b>Catalog Number</b>	E220002-1, E220002-2
<b>Amount</b>	50µg/50µl, 100µg/100µl
<b>Description</b>	Mouse monoclonal IgG to ACSS1
<b>GeneBank ID</b>	NM_032501.2
<b>Immunogen</b>	Recombinant fragment of human ACSS1 (C-terminus).
<b>Reacts with</b>	Hu
<b>Tested applications</b>	Recommended dilutions. ELISA: 1/5000 - 1/20000. WB: 1/100-1/2000.
<b>Relevance</b>	An acetyl-CoA synthetase found in the mitochondrial matrix has been characterized in both cow and mouse. It is primarily a cardiac enzyme which produces acetyl-CoA mainly for the oxidation of acetate. The protein encoded by this gene is structurally similar to the cow and mouse proteins and therefore may serve a similar function in humans.
<b>Purity</b>	Protein G-Sepharose affinity purified.
<b>Storage buffer</b>	Preservative: 0.02% Sodium Azide and 50% glycerol, 1% BSA, PBS, pH7.4.
<b>Form</b>	Liquid
<b>Storage instructions</b>	Aliquot and store at -20°C. Avoid repeated freeze / thaw cycles.



ACSS1 antibody (E220002) at 1/2000 dilution interacts with recombinant ACSS1 protein with a GST tag. Predicted band size: 40Kda. Observed band size: 40Kda.

**For Research Use Only**