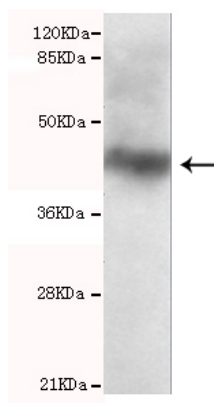




## SOCS3 Antibody

**E220003**

<b>Catalog Number</b>	E220003-1, E220003-2
<b>Amount</b>	50µg/50µl, 100µg/100µl
<b>Description</b>	Mouse monoclonal IgG to SOCS3
<b>GeneBank ID</b>	NM_003955.3
<b>Immunogen</b>	Recombinant fragment of Human SOCS3 (N-terminus).
<b>Reacts with</b>	Hu
<b>Tested applications</b>	Recommended dilutions. ELISA: 1/5000 - 1/20000. WB: 1/100-1/2000.
<b>Relevance</b>	SOCS3 is an SH2-containing protein that binds to the activation loop of Janus kinases, inhibiting kinase activity and thereby suppressing cytokine signaling. It is a member of the STAT-induced STAT inhibitor (SSI), also known as suppressor of cytokine signaling (SOCS), family. The expression of the SOCS3 gene is induced by various cytokines, including IL6, IL10, and interferon (IFN)-gamma. Studies of the mouse counterpart of the SOCS3 gene suggested this gene is involved in the negative regulation of fetal liver hematopoiesis, and placental development.
<b>Purity</b>	Protein G-Sepharose affinity purified.
<b>Storage buffer</b>	Preservative: 0.02% Sodium Azide and 50% glycerol, 1% BSA, PBS, pH7.4.
<b>Form</b>	Liquid
<b>Storage instructions</b>	Aliquot and store at -20°C. Avoid repeated freeze / thaw cycles.



SOCS3 antibody (E220003) at 1/500 dilution. Mouse muscle tissue 30ug/lane. Predicted band size: 27Kda. Observed band size: 45Kda.

**For Research Use Only**