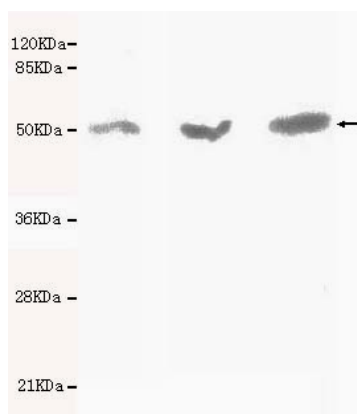




## KDM1A Antibody

**E220007**

<b>Catalog Number</b>	E220007-1, E220007-2
<b>Amount</b>	50µg/50µl, 100µg/100µl
<b>Description</b>	Mouse monoclonal IgG to KDM1A
<b>GeneBank ID</b>	NM_001009999
<b>Immunogen</b>	Recombinant fragment of human KDM1A (Internal).
<b>Reacts with</b>	Human
<b>Tested applications</b>	Recommended dilutions. ELISA: 1/5000-1/20000. WB: 1/100-1/2000.
<b>Cellular localization</b>	Nucleus
<b>Relevance</b>	This gene encodes a nuclear protein containing a SWIRM domain, a FAD-binding motif, and an amine oxidase domain. This protein is a component of several histone deacetylase complexes, though it silences genes by functioning as a histone demethylase. Alternative splicing results in multiple transcript variants.
<b>Purity</b>	Protein G-Sepharose affinity purified.
<b>Storage buffer</b>	Preservative: 0.02% Sodium Azide and 50% glycerol, 1% BSA, PBS, pH7.4.
<b>Form</b>	Liquid
<b>Storage instructions</b>	Aliquot and store at -20°C. Avoid repeated freeze / thaw cycles.



KDM1 A antibody (E220007) at 1/1000 dilution. Lane 1: MCF7 whole cell lysate 40ug/Lane. Lane 2: 3T3 whole cell lysate 40ug/Lane. Lane 3: 293T whole cell lysate 40ug/Lane. Predicted band size: 95Kda. Observed band size: 50Kda.

**For Research Use Only**