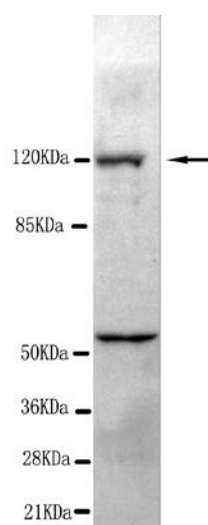




## PHF8 Antibody

**E220012**

<b>Catalog Number</b>	E220012-1, E220012-2
<b>Amount</b>	50µg/50µl, 100µg/100µl
<b>Description</b>	Mouse monoclonal IgG to PHF8
<b>Immunogen</b>	Recombinant fragment of Human PHF8 (C-terminus).
<b>GeneBank ID</b>	NM_015107
<b>Reacts with</b>	Hu
<b>Tested applications</b>	Recommended dilutions. ELISA: 1/5000 - 1/20000. WB: 1/100-1/2000.
<b>Cellular localization</b>	Nucleus
<b>Relevance</b>	PHD finger protein (PHF8) is a jumonji domain containing protein that may, like other members of the jumonji family, have a role in histone demethylation. Truncating mutations of the PHF8 gene can lead to X-linked mental retardation (XLMR) associated with cleft lip / palate.
<b>Purity</b>	Protein G-Sepharose affinity purified
<b>Storage buffer</b>	Preservative: 0.02% Sodium Azide and 50% glycerol, 1% BSA, PBS, pH7.4.
<b>Storage instructions</b>	Aliquot and store at -20°C. Avoid repeated freeze / thaw cycles.



PHF8 antibody (E220012) at 1/1000 dilution. 293 Whole cell lysate 30ug/Lane. Predicted band size: 118Kda. Observed band size: 120Kda. Additional band size: 60Kda.

**For Research Use Only**