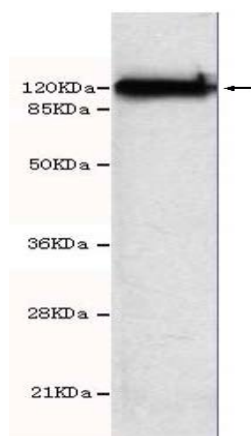




KIF11 Antibody

E220018

Catalog Number	E220018-1, E220018-2
Amount	50µg/50µl, 100µg/100µl
Description	Mouse monoclonal IgG to KIF11
GeneBank ID	NM_004523
Immunogen	Recombinant fragment of Human KIF11 (N-terminus).
Reacts with	Hu
Tested applications	Recommended dilutions. ELISA: 1/5000 - 1/2000. WB: 1/100-1/2000.
Cellular localization	Cytoplasm.
Relevance	KIF11 is a motor protein that belongs to the kinesin-like family. Members of this protein family are known to be involved in various kinds of spindle dynamics. The function of this gene product includes chromosome positioning, centrosome separation and establishing a bipolar spindle during cell mitosis.
Purity	Protein G-Sepharose affinity purified
Storage buffer	Preservative: 0.02% Sodium Azide and 50% glycerol, 1% BSA, PBS, pH7.4.
Form	Liquid
Storage instructions	Aliquot and store at -20°C. Avoid repeated freeze / thaw cycles.



KIF11 antibody (E220018) at 1/500 dilution. HeLa whole cell lysate 40ug/Lane. Predicted band size: 120Kda. Observed band size: 120Kda.

For Research Use Only