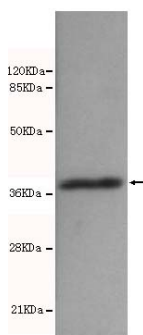




Bmi1 Antibody

E220019

Catalog Number	E220019-1, E220019-2
Amount	50µg/50µl, 100µg/100µl
Description	Mouse monoclonal IgG to Bmi1
GeneBank ID	NM_005180.5
Immunogen	Synthetic peptide from the N-terminal region of human Bmi1, conjugated to KLH.
Reacts with	Hu
Tested applications	Recommended dilutions. ELISA: 1/5000 - 1/20000. WB: 1/100-1/2000.
Cellular localization	Nucleus
Relevance	The Bmi1 oncogene induces telomerase activity and immortalizes human mammary epithelial cells. Bmi1 extends the replicative life span of human fibroblasts by suppressing the p16-dependent senescence pathway. Bmi1 plays a central role in the inheritance of stemness, and its forced expression promotes HSC self-renewal. These findings highlight the importance of epigenetic regulation in HSC self-renewal and identify PcG genes as potential targets for therapeutic HSC manipulation.
Purity	Protein G-Sepharose affinity purified
Storage buffer	Preservative: 0.02% Sodium Azide and 50% glycerol, 1% BSA, PBS, pH7.4.
Form	Liquid
Storage instructions	Aliquot and store at -20°C. Avoid repeated freeze / thaw cycles.



Bmi1 antibody (E220019) at 1/500 dilution. Hela whole cell lysate at 40ug/Lane. Predicted band size: 37Kda. Observed band size: 37Kda.

For Research Use Only