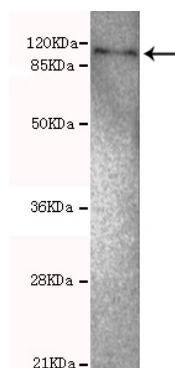




## TLR2 Antibody

**E220021**

<b>Catalog Number</b>	E220021-1, E220021-2
<b>Amount</b>	50µg/50µl, 100µg/100µl
<b>Description</b>	Mouse monoclonal IgG to TLR2
<b>GeneBank ID</b>	NM_003264.3
<b>Immunogen</b>	Synthetic peptide from the C-terminal region of human TLR2, conjugated to KLH.
<b>Reacts with</b>	Hu
<b>Tested applications</b>	Recommended dilutions. ELISA: 1/5000 - 1/20000. WB: 1/100-1/2000.
<b>Cellular localization</b>	Plasma membrane.
<b>Relevance</b>	This protein is a member of the Toll like receptor (TLR) family which plays a fundamental role in pathogen recognition and activation of innate immunity. TLRs are highly conserved from Drosophila to humans and share structural and functional similarities. This gene is expressed most abundantly in peripheral blood leukocytes, and mediates host response to Gram positive bacteria and yeast via stimulation of NF kappaB.
<b>Purity</b>	Protein G-Sepharose affinity purified.
<b>Storage buffer</b>	Preservative: 0.02% Sodium Azide and 50% glycerol, 1% BSA, PBS, pH7.4.
<b>Form</b>	Liquid
<b>Storage instructions</b>	Aliquot and store at -20°C. Avoid repeated freeze / thaw cycles.



TLR2 antibody (E220021) at 1/500 dilution. Hela whole cell lysate 40ug. Predicted band size: 90Kda.  
Observed band size: 100Kda.

**For Research Use Only**