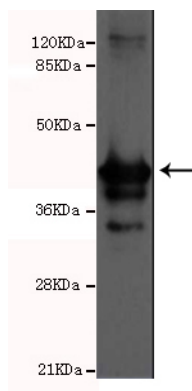




MED1 Antibody

E220023

Catalog Number	E220023-1, E220023-2
Amount	50µg/50µl, 100µg/100µl
Description	Mouse monoclonal IgG to MED1
GeneBank ID	NM_004774.3
Immunogen	Recombinant fragment of Human MED1 (C-terminus)
Reacts with	Hu
Tested applications	Recommended dilutions. ELISA: 1/5000 - 1/20000. WB: 1/100-1/2000.
Cellular localization	Nucleus
Relevance	MED1 work with coactivators to direct transcriptional initiation by the RNA polymerase II apparatus. The protein encoded by this gene is a subunit of the CRSP (cofactor required for SP1 activation) complex, which, along with TFIID, is required for efficient activation by SP1. It also regulates p53 dependent apoptosis and it is essential for adipogenesis. This protein is known to have the ability to self-oligomerize.
Purity	Protein G-Sepharose affinity purified
Storage buffer	Preservative: 0.02% Sodium Azide and 50% glycerol, 1% BSA, PBS, pH7.4.
Form	Liquid
Storage instructions	Aliquot and store at -20°C . Avoid repeated freeze / thaw cycles.



TRAP220 antibody (E220023) at 1/2000 dilution interacts with recombinant MED1 protein with a His tag. Predicted band size: 45Kda. Observed band size: 45Kda.

For Research Use Only