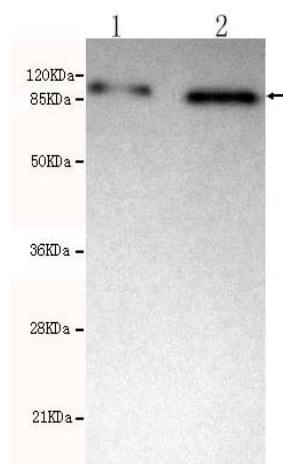




## KDM1A Antibody

E220025

<b>Catalog Number</b>	E220025-1, E220025-2
<b>Amount</b>	50µg/50µl, 100µg/100µl
<b>Description</b>	Mouse monoclonal to KDM1A
<b>GeneBank ID</b>	NM_001009999
<b>Immunogen</b>	Recombinant fragment of Human KDM1A (N-terminus).
<b>Reacts with</b>	Hu
<b>Tested applications</b>	Recommended dilutions. ELISA: 1/5000 - 1/20000. WB: 1/100-1/2000.
<b>Cellular localization</b>	Nucleus
<b>Relevance</b>	This gene encodes a nuclear protein containing a SWIRM domain, a FAD-binding motif, and an amine oxidase domain. This protein is a component of several histone deacetylase complexes, though it silences genes by functioning as a histone demethylase. Alternative splicing results in multiple transcript variants.
<b>Storage buffer</b>	Preservative: 0.02% Sodium Azide and 50% glycerol, 1% BSA, PBS, pH7.4.
<b>Form</b>	Liquid
<b>Storage instructions</b>	Aliquot and store at -20°C. Avoid repeated freeze / thaw cycles.



KDM1A antibody (E220025) at 1/500 dilution. Lane 1: MCF7 whole cell lysate 40ug/Lane. Lane 2: Jurkat whole cell lysate 35ug/Lane.

**For Research Use Only**