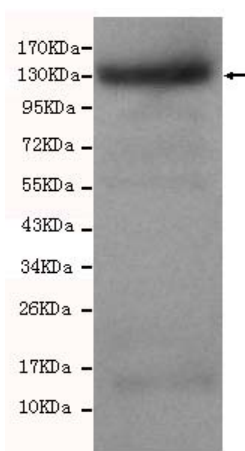




KLF4 Antibody

E220033

Catalog Number	E220033-1, E220033-2
Amount	50µg/50µl, 100µg/100µl
Description	Mouse monoclonal IgG to KLF4
GeneBank ID	NM_010637
Immunogen	Recombinant full length of Mouse KLF4.
Reacts with	Mus, Hu
Tested applications	Recommended dilutions. ELISA: 1/5000 - 1/20000. WB: 1/100-1/2000.
Cellular localization	Nucleus
Relevance	KLF4 is a transcription factor that works with Sp1 to activate the Laminin gamma1 chain gene. It binds the CACCC core sequence. KLF4 may be involved in the differentiation of epithelial cells and may also function in the development of the skeleton and kidney. KLF4 also has roles as both an oncogene and a tumor suppressor.
Purity	Protein G-Sepharose affinity purified.
Storage buffer	Preservative: 0.02% Sodium Azide and 50% glycerol, 1% BSA, PBS, pH7.4.
Form	Liquid
Storage instructions	Aliquot and store at -20°C. Avoid repeated freeze / thaw cycles.



KLF4 antibody (E220033) at 1/500 dilution. Hela whole cell lysate 40ug/Lane, Predicted band size: 170Kda, Observed band size: 130Kda.

For Research Use Only