

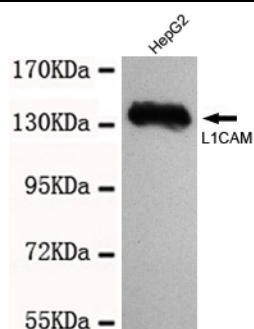


NCAM-L1 (N-terminus) Antibody

E2200338

Catalog Number:	E2200338
Size:	100ug
Host:	Mouse
Formulation:	Purified mouse monoclonal in buffer containing 0.1M Tris-Glycine (pH 7.4, 150 mM NaCl) with 0.2% sodium azide, 50% glycerol
Sensitivity:	This antibody detects endogenous levels NCAM-L1(N-terminus) and does not cross-react with related proteins.
Entrez summary:	The L1CAM gene, which is located in Xq28, is involved in three distinct conditions: 1) HSAS (hydrocephalus-stenosis of the aqueduct of Sylvius); 2) MASA (mental retardation, aphasia, shuffling gait, adductus thumbs); and 3) SPG1 (spastic paraplegia). The L1, neural cell adhesion molecule (L1CAM) also plays an important role in axon growth, fasciculation, neural migration and in mediating neuronal differentiation. Expression of L1 protein is restricted to tissues arising from neuroectoderm.
UniPort summary	Cell adhesion molecule with an important role in the development of the nervous system.
Function:	Involved in neuron-neuron adhesion, neurite fasciculation, outgrowth of neurites, etc. Binds to axonin on neurons.
Immunogen:	Purified recombinant human NCAM-L1(N-terminus) protein fragments expressed in E.coli.
Antibody Type:	Monoclonal antibody
Isotype:	IgG1
Purified method:	Affinity purified
Subcellular location:	Cytoplasm
Reactivity:	H
Applications:	WB
Molecular Weight:	140kDa
UniProt number:	P32004
GeneBank ID:	NM_000425
Gene symbol:	S10; HSAS; MASA; MIC5; SPG1; CAML1; CD171; HSAS1; N-CAML1; NCAM-L1; N-CAM-L1
Alternate names:	S10; HSAS; MASA; MIC5; SPG1; CAML1; CD171; HSAS1; N-CAML1; NCAM-L1; N-CAM-L1

For Research Use Only



Western blot detection of NCAM-L1(N-terminus) antibody in HepG2 cell lysates using NCAM-L1(N-terminus) antibody (1:1000 diluted). Predicted band size:140KDa Observed band size:140KDa.